



# INTERNATIONAL DIRECTORY

of Joint Protestant-Roman  
Catholic Schools, Colleges  
and Universities

# 2021

*"Thy People Shall Be My People"*  
Ruth 1:16



**INTERNATIONAL DIRECTORY**  
of Joint Protestant-Roman Catholic  
Schools, Colleges and Universities

2021





First published June 2007, 2nd edition March 2021

**GUILDHALL PRESS**

Ráth Mór Centre  
Derry~Londonderry  
Northern Ireland  
BT48 0LF

Revised and expanded from the First Edition which was published in 2007 by Foyle Trust for Integrated Education, Derry~Londonderry, Northern Ireland, United Kingdom (funded by a research/publication grant from the Integrated Education Fund, Belfast).

ISBN 978 1 911053 47 7

This 2nd edition is funded by  
The Northern Ireland Council for Integrated Education  
25 College Gardens  
BELFAST  
BT9 6BS  
United Kingdom  
[www.nicie.org](http://www.nicie.org)  
Email: [admin@nicie.org.uk](mailto:admin@nicie.org.uk)  
Tel: (+44) 28 9097 2910

## CONTENTS (in alphabetical order)

Preface	vii
Introduction by Most Rev Dr Dónal McKeown, Bishop of Derry	viii
Introduction by Rev Robert Herron, Minister of Trinity Omagh & Gillygooley Presbyterian Church	ix
Academy of St Francis of Assisi, Liverpool, UK (2005)	1
Academy of St Nicholas, Liverpool, UK (2010)	2
Alderley Edge School for Girls, Cheshire (1999)	3
All Saints Academy, Cheltenham, UK (2011)	4
All Saints Ecumenical Nursery, All Saints CofE School, London, UK (2000)	5
All Saints Inter-Church Academy, March, UK (1994)	6
All Saints Sixth Form College, Liverpool, UK (2017)	7
Associated 6th Form: St Aidan's CofE High School & St John Fisher Catholic High School, Harrogate, UK (1973)	8
Bayview College, Victoria, Australia (1977)	9
Braemar College, Victoria , Australia (1976)	10
Christ the King Joint Catholic & CofE College, Isle of Wight, UK (2008)	11
Christ the King Primary School, Macclesfield, UK (2011)	12
Doane Stuart School, NY, USA (1975)	13
Emmaus Catholic & CofE Primary School, Sheffield, UK (2014)	14
Emmaus CofE & Catholic Primary School, Liverpool, UK (1997)	15
Emmaus College, Queensland, Australia (2002)	16
Faith Primary School Roman Catholic-Church of England, Liverpool, UK (2004)	17
Gaelscoil Shlí Dála, Borris in Ossory, Ireland (2005)	18
Graduate Theological Union, California, USA (1964)	19
Highview College, Victoria, Australia (1974)	20
Holy Family RC & CofE College, Rochdale, UK (2007)	21
Holy Spirit Catholic & CofE Primary School, Wirral, UK (2010)	22
Holy Trinity Academy, Telford, UK (2015)	23

Holy Trinity Catholic & CofE School, Barnsley, UK (2012)	24
Hope Academy, St Helen's, UK (2011)	25
Hope Primary School, Liverpool, UK (2011)	26
John Paul College, Queensland, Australia (1982)	27
Jubilee Primary, Queensland, Australia (2001)	28
Liverpool Hope University, Liverpool, UK (1979)	29
St Bede's Inter-Church School, Cambridge, UK (1988)	30
St Bede's School, Redhill, UK (1976)	31
St Chad's Catholic & CofE Joint Faith High School, Runcorn, UK (2009)	32
St Columba College, South Australia (1997)	33
St Cuthbert Mayne RC & CofE School, Torquay, UK (c1975)	34
St Edward's RC-CofE School, Poole, UK (1991)	35
St Edward's Royal Free Ecumenical Middle School, Windsor, UK (1986)	36
St Francis Catholic & CofE Primary Academy, Isle of Wight, UK (2010)	37
St Francis Xavier's RC-CofE School, Richmond, N Yorkshire, UK (1988)	38
St Joseph's Catholic & Anglican High School, Wrexham, Wales, UK (2006)	39
St Joseph's Catholic & CofE Primary School, Chesterfield, UK (2006)	40
Stann Creek Ecumenical College, Dangriga, Belize (1974)	41
The Bishops' RC & CofE Primary School, Chelmsford, UK (1992)	42
Trinity School, Teignmouth, UK (1979)	43
Unity College, Queensland, Australia (2006)	44
University of Roehampton, London, UK (1975)	45
Appendix 1. Schools listed by Country	46
Appendix 2: Schools listed by Date of Foundation	47
Appendix 3: Guidelines for Joint-Church Schools: in Northern Ireland; and in England and Wales.	48



# PREFACE

The Northern Ireland Council for Integrated Education is very pleased to present this second edition of the worldwide directory of joint Protestant-Catholic education institutions. We trust that it will be both of interest and of practical use to the schools themselves; to the churches; to educationalists; and to everyone interested in reconciling old differences and promoting unity in our fractured world.



The directory lists schools at all levels of education, from primary to university - called, of course, by different titles in different countries:- primary/elementary/secondary/colleges/high schools, etc.

The first, groundbreaking, edition in 2007 located 21 of these institutions. But unfortunately the research at that time failed to locate some schools in Australia and Belize. Some of the schools listed in 2007 have now amalgamated or closed; and many new schools have opened. So this 2019 edition now comprises 45 schools - more than twice the number in the original edition. We have tried to make sure that no others have been left out.

We have also tried to provide readers with information for each school in a similar, easy-to-use format for each school - name/address/contact details/website/social media/principal's name/churches involved/founding date/etc. Schools are listed in alphabetical order of name - and we have also provided a list of the schools in chronological order of foundation (1964-2017); and on a country basis (Australia, Belize, Ireland, United Kingdom, and United States of America).

It hasn't been easy to collect the information. To appear in a directory is not the most pressing priority for a busy school! So we thank the schools for their help and patience in compiling this new edition.

This directory will be available from NICIE, and will also be freely accessible on-line at [www.nicie.org](http://www.nicie.org) So to add new additional schools, or to update details, on this online edition, please do contact NICIE at the email address below.

We give our warm thanks to Bishop McKeown and Rev Herron for their introductions; and we thank the editor, Colm Cavanagh, for compiling the information.

Roisin Marshall  
 Chief Executive Officer  
 Northern Ireland Council for Integrated Education  
 25 College Gardens  
 Belfast  
 Northern Ireland  
 BT9 6BS  
 United Kingdom

Tel: (+44) 28 9097 2910  
 Email c/o: [admin@nicie.org](mailto:admin@nicie.org)

# INTRODUCTION

The Christian Church has a long history of involvement in education and learning. The early monasteries were dedicated to prayer, work - and study. The first European universities were intimately linked to the Church, where material was not limited to theology. Study of the sciences, philosophy and the wisdom of other cultures were all facilitated. And Christian missionary activity very often began with offering education. All around the world, faith-based education continues to be in big demand. The specific family of Catholic schools have always been clear that they do not just offer a good secular education with a bit of religion as an add-on. We have offered schools because we consider them “as a privileged means of promoting the formation of the whole person, since the school is a centre in which a specific concept of the world, of the human person and of history is developed and conveyed.” \*



The challenge for this generation is to find how we can best continue that mission in the service of the Common Good. Thus, I welcome this publication on the topic of inter-church schools from around the world. In Northern Ireland, we can seek to learn from these creative initiatives. These inter-church schools and colleges are all responses to local circumstances and changes. They challenge all of us to be a blessing on this generation so that God’s healing mercy in Jesus can help our young people dream the divine dream for the future.

+ Most Rev Dónal McKeown  
Bishop of Derry

\* [http://www.vatican.va/roman\\_curia/congregations/ccatheduc/documents/rc\\_con\\_ccatheduc\\_doc\\_19770319\\_catholic-school\\_en.html](http://www.vatican.va/roman_curia/congregations/ccatheduc/documents/rc_con_ccatheduc_doc_19770319_catholic-school_en.html) (paragraph 8)

# INTRODUCTION

In Northern Ireland in the 1930s, 40s, and 50s, the Church of Ireland (Anglican), Presbyterian and Methodist churches transferred their school buildings, pupils and staff into state control on the understanding that the Christian ethos of those schools was maintained. This agreed principle was enshrined in an Act of Parliament. As a result, the churches were given rights of representation on the governing body of each school transferred as well as new schools built and controlled by the state.



Today, approximately half of Northern Ireland's pupils attend these state-controlled schools. The transferring churches continue to nominate governors. Church nominated governors make up less than 50% of the governing body. These schools are open to the whole community.

The church nominated governors encourage the school to promote an understanding of the world within the context of belief in God and Christian faith. [*“Moving Forward Together – Core values in Controlled Schools in Northern Ireland” published by the Transferor Representatives’ Council*]

They seek to foster tolerance of and respect for the beliefs of others including those with no religious belief. They aim to challenge the school community to put into practice the Christ-like principles of:

- Forgiveness and reconciliation
- Justice, compassion, and peace in the world
- Responsibility for using God-given talents
- The command to love God and our neighbour
- Stewardship of creation

In 2015, at the request of the transferring churches and the Catholic church, the Department of Education (NI) published an information guide for those stakeholders interested in establishing jointly managed schools by the Protestant and Catholic Churches in Northern Ireland that would provide shared education with a Christian ethos. To date, no jointly managed church school has been established. [<https://www.education-ni.gov.uk/sites/default/files/publications/de/2015-15-jointly-managed-schools.pdf>].

It is a privilege to be associated with this directory of international educational establishments that have taken that courageous step to cross the age-old Protestant/Catholic divide.

Rev Robert Herron  
 Minister  
 Trinity Omagh & Gillygooley Presbyterian Church  
 County Tyrone  
 Northern Ireland



# ACADEMY OF ST FRANCIS OF ASSISI

(United Kingdom)

**Address:** Gardner's Drive, Liverpool, L6 7UF, United Kingdom

**Telephone:** (+44) 151.260.7600.

**Email:** [info@asfaonline.org](mailto:info@asfaonline.org)

**Website/Social Media:** [www.asfaonline.org](http://www.asfaonline.org)



**Headteacher:** Mr Kevin Maddocks (*photo*)

**Number/Age Range of students:** 852 pupils (aged 11- 16 years).

**Religious Denominations involved:** Church of England and Roman Catholic Church.

**Sponsoring Churches:** The Anglican and Roman Catholic Dioceses of Liverpool.

**Mission Statement:** *"Success for All"*.

**Our Vision:** *"A diverse learning Community. That enables all our individuals to achieve"*.

**Our Values:** *"Respect - Ambition - Pride - Happiness - Peace and Reconciliation"*.

**Date of Foundation as a Joint-Church Academy:** September 2005.

**Prior History:** The Bishop and Archbishop agreed to create in 2005 a Joint Catholic-Church of England Academy from the then (RC) Our Lady's High School.

**Structure of Joint Governance:** The Academy is proud to be a member of the All Saints Multi Academy Trust, which is the operating name for the Liverpool Joint Catholic and Church of England Academies Trust (Company Number 07007398).

**Experience of Joint Governance:**

*"Our distinct christian ethos underpins every aspect of Academy life at St Francis of Assisi. ... Collective worship is at the heart of daily life ..."*



# THE ACADEMY OF ST NICHOLAS

(United Kingdom)

**Address:** 51 Horrocks Avenue, Liverpool, L19 5NY, United Kingdom

**Telephone:** (+44) 151 230 2570.

**Email:** [info@astn.uk](mailto:info@astn.uk)

**Website/Social Media:** [www.theacademyofstnicholas.org.uk](http://www.theacademyofstnicholas.org.uk)

**Head of School:** Ms J Sing (*photo*)

**Number/Age Range of students:** 765 students (aged 11-16 years).  
Admissions Number: 180.

**Religious Denominations involved:** Anglican and Roman Catholic.

**Sponsoring Churches:** The Church of England Diocese of Liverpool and the Catholic Archdiocese of Liverpool.

**Motto:** *"Inspiring Excellence"*.

## **Date of Foundation as a Joint-Church**

**Academy:** It opened on 1 September 2010 as "Enterprise South Liverpool Academy". In February 2017 it changed its name to "The Academy of St Nicholas" and, with the Academy of St Francis of Assisi, opened the "All Saints Sixth Form College" (listed separately).

**Prior history:** Its predecessor schools were: New Heys Comprehensive School (closed 30.Aug 2010); and St Benedict's RC College (closed 30 Aug 2010).

**Structure of Joint Governance:** In 2017 the Academy joined the All Saint Multi Academy Trust (the Liverpool Joint Catholic and Church of England Academies Trust).



# ALDERLEY EDGE SCHOOL FOR GIRLS

(United Kingdom)

**Address:** Wilmslow Road, Alderley Edge, Cheshire, SK9 7QE, United Kingdom

**Telephone:** (+44) 1625 583028.

**Email:** [schoolmail@aesg.co.uk](mailto:schoolmail@aesg.co.uk)

**Website/Social Media:** [www.aesg.co.uk](http://www.aesg.co.uk)



**Headmistress:** Mrs Nicola Smillie (*photo*)

**Number/Age Range of students:** 541 girls (aged from 2 years in Nursery to 18 years in 6th Form)

**Religious Denominations involved:** The school combines the Catholic traditions of the Order of St Joseph and the Anglican heritage of the Woodward Corporation. Both religious traditions are taught and girls of all faiths are admitted.

**Sponsoring Churches:** Anglican Diocese of Chester and Roman Catholic Diocese of Shrewsbury.

**Motto:** "Forward with Faith".

**Date of Foundation as a Joint-Church School:** 1999

**Prior History:** 1999 saw the merger of two earlier schools - St Hilary's School (founded in 1876) and Mount Carmel Roman Catholic School (founded in 1945 by the Sisters of St Joseph).



# ALL SAINTS' ACADEMY

(United Kingdom)

**Address:** Blaisdon Way, Cheltenham, Gloucestershire, GL51 0WH, UK

**Telephone:** (+44) 1242 711200.

**Email:** [admin@asachelt.org](mailto:admin@asachelt.org)

**Website/Social Media:** [www.asachelt.org](http://www.asachelt.org)

**Principal:** Mr Dermot McNiffe (*photo*)

**Number & Age Range of students:** 1,120 students (aged 11-18 years) including 220 in Sixth Form.

**Religious Denominations involved:** Anglican and Roman Catholic.

**Sponsoring Churches:** The Church of England Diocese of Gloucester and Catholic Diocese of Clifton.

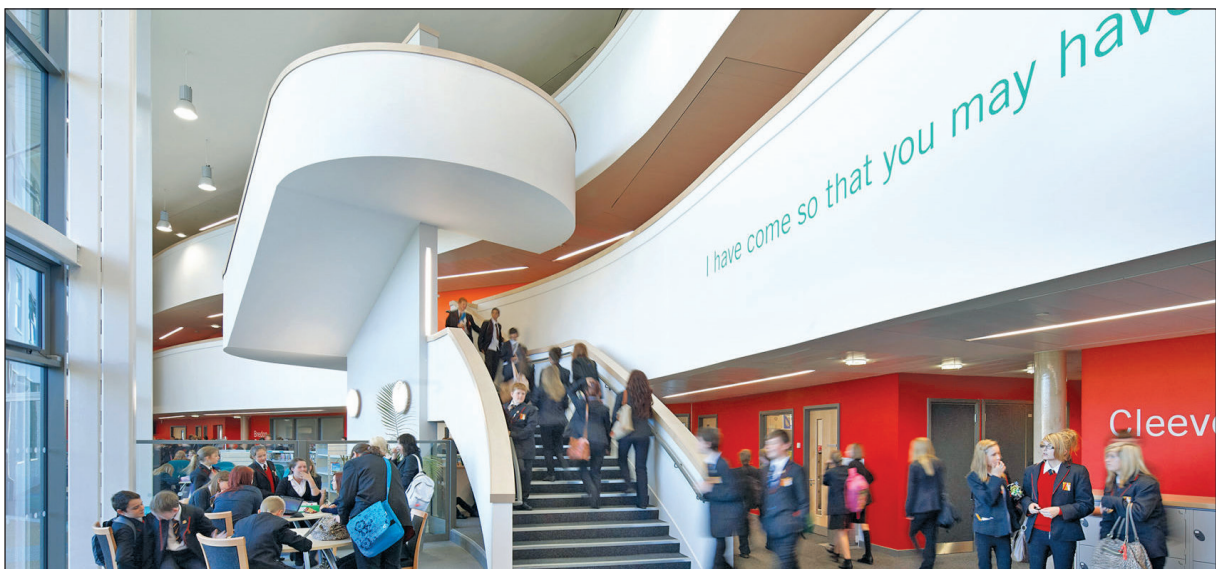
**Motto:** "Achieve Excellence".

**Date of Foundation as a Joint-Church Academy:** 2011.

**Prior History:** All Saints Academy was formed from two schools: Christ College had been a joint church school since 2007; and the other was a community school without a religious character.

**Structure of Joint Governance:** The 12-member Governing Body is made up of 7 representatives\_ from both of the Sponsor Dioceses (Clifton and Gloucester), the Local Authority, the Chair of Governors, two Partner Governors, the Principal, and representatives of the parents and staff at the Academy.

**Experience of Joint Governance:** As a joint Anglican and Catholic academy Religious Education is seen as a core subject and both dioceses require a specified amount of time on the timetable for RE. All students have 4 lessons of RE every 2 weeks and follow a Religious Education programme approved by the two bishops. Students are given the opportunities to know, understand and question the beliefs, teachings and practices of the Anglican and Catholic traditions and of other world faiths. All students take GCSE Religious Studies and the sixth form are offered A-Level Philosophy and Ethics. All students take part in a daily collective act of worship or Assembly. Every term there is an Anglican Eucharist and a Catholic Mass for those who wish to attend. In the spirit of Christianity, the Academy welcomes students of all faiths and none.





# ALL SAINTS ECUMENICAL NURSERY CLASS

(United Kingdom)

**Address:** All Saints' School Church of England Primary School, Putney Common, Putney, London, SW15 1HL, United Kingdom

**Telephone:** All Saints School: (+44) 208 788 5196

**Email:** [admin@allsaints.wandsworth.sch.uk](mailto:admin@allsaints.wandsworth.sch.uk)  
[head@ourladyofvictories.wandsworth.sch.uk](mailto:head@ourladyofvictories.wandsworth.sch.uk) [Roman Catholic Primary School].

**Website/Social Media:** [www.allsaintsputney.org.uk](http://www.allsaintsputney.org.uk)



**Headteacher:** Ms Claire Woods BA (Hons).

**Number/Age Range of pupils:** 52 Part Time Places (18 RC and 34 CofE): aged 3 years.

**Religious Denominations involved:** Anglican and Roman Catholic

**Sponsoring Churches:** Southwark (Anglican) and Southwark (RC)

**Motto:** "Rooted in Faith, Growing Through Learning".

**Date of Foundation as a Joint-Church Nursery:** September 2000.

**Prior History:** The Nursery class is a joint venture between All Saints' Church of England School and Our Lady of Victories Roman Catholic Primary School.

**Structure of Joint Governance:** The Nursery is based at All Saints' School, whose Governing Body is responsible for admission to the class.



# ALL SAINTS INTER-CHURCH ACADEMY (United Kingdom)



**Address:** County Road, March, Cambridgeshire, United Kingdom, PE15 8ND

**Telephone:** (+44) 1354 659000

**Email:** [office@allsaints.cambs.sch.uk](mailto:office@allsaints.cambs.sch.uk)

**Website/Social Media:** [www.allsaints.cambs.sch.uk](http://www.allsaints.cambs.sch.uk)



**Head Teacher:** Mr Mark Millinson MEd BPhil BEd (Hons) *(photo)*

**Number & Age Range of students:** 226 pupils aged 4-11 years (30 entrance places each year: 15 places for church children and 15 for other children living in the catchment area).

**Religious Denominations:** Roman Catholic and Anglican.

**Sponsoring Churches:** Roman Catholic Diocese of East Anglia and Anglican Diocese of Ely.

**Motto:** A Christian Community: Pursuing Excellence, Challenging Children, Nurturing Spirituality and Inspiring Values.

**Date of Foundation as a Joint-Church School:** September 1994. In 2013 the All Saints Inter-Church School became All Saints Inter-Church Academy.

**Prior History:** With increased housing in the area, there was a need for extra primary provision. With neither the Catholic nor Church of England population large enough to justify single-denominational schools, it was agreed by the two churches and the local Education Authority to establish a new school for Catholic and Anglican children, with spaces also offered for other children in the area.

**Structure of Joint Governance:** The Catholic and Anglican bishops and others from both churches participate on the board of trustees. The school is linked to 3 Church of England parishes and 1 Catholic parish. The governors' committee meets half-terminly and all the clergy are invited to attend.

**Experience of Joint Governance:** "There has been no noticeable controversy whatsoever. The dioceses are very supportive of us"

# ALL SAINTS' SIXTH FORM COLLEGE

(United Kingdom)

**Address:** 51 Horrocks Avenue, Liverpool, Merseyside, L19 5NY, United Kingdom

**Telephone:** (+44) 151 230 2570

**Email Address:** [info@allsaintssixthform.org.uk](mailto:info@allsaintssixthform.org.uk)

**Website/Social Media:** [www.allsaintssixthformcollege.org.uk](http://www.allsaintssixthformcollege.org.uk)



**Headteacher:** Mrs J Sing (*photo*)

**Head of School: Sixth Form:** Mrs Jacqui Lawson ([lawsonj@allsaintssixthformcollege.org.uk](mailto:lawsonj@allsaintssixthformcollege.org.uk))

**Number/Age Range of students:** 380 students aged 16-18 years.

**Religious Denominations involved:** Anglican and Roman Catholic.

**Sponsoring Churches:** The Church of England Diocese of Liverpool and the Roman Catholic Archdiocese of Liverpool.

**Date of Foundation as a Joint-Church College:** September 2017.

**Prior History:** The Sixth Form College is a collaboration between the Academy of St Nicholas and the Academy of St Francis of Assisi, both of which are, like the Sixth Form College, members of the All Saints Multi Academy Trust.



**Structure of Joint Governance:** The Sixth Form College is a member of the All Saints Multi Academy Trust (the operating name for the Liverpool Joint Catholic and Church of England Academies Trust: Company Number 07007398).



# ASSOCIATED SIXTH FORM: ST AIDAN'S AND ST JOHN FISHER HIGH SCHOOL

(United Kingdom)



**Address:** Oatlands Drive, Harrogate, North Yorkshire, HG2 8JR,  
United Kingdom and  
Hookstone Drive, Harrogate, North Yorkshire, HG2 8PT, United Kingdom

**Telephone:** (+44) 1423 818516 and (+44) 1423 818426

**Email:** [associatedsixthform@staidans.co.uk](mailto:associatedsixthform@staidans.co.uk)  
[office@sjfchs.org.uk](mailto:office@sjfchs.org.uk)

**Website/Social Media:** [www.staidans.co.uk/sixth-form/](http://www.staidans.co.uk/sixth-form/)  
[www.sjfchs.org.uk/sixth-form/welcome/](http://www.sjfchs.org.uk/sixth-form/welcome/)

**Headteachers:** Mr C Burt, Headteacher of St Aidan's Church of England High School.  
Mr S Mort, Headteacher of St John Fisher Catholic High School.

**Number/Age Range of students:** Over 1000 students aged 16-18 years.

**Religious Denominations involved:** The Schools are sponsored by the Anglican and Catholic Churches. But all religious denominations are represented in the Associated Sixth Form.

**Sponsoring Churches:** Church of England and Roman Catholic Dioceses of Leeds.

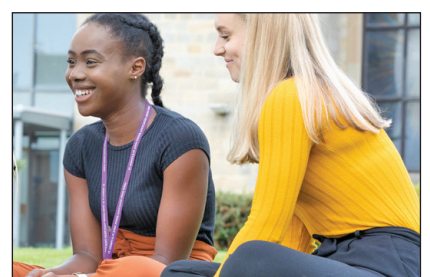
**Date of Foundation as a Joint-Church Sixth Form:** The Associated Sixth Form was created in 1973 as a unique venture in ecumenical education.

**Structure of Joint Governance:** Members of each school's Governing Body meet as the Associated Sixth Form Governors' Committee termly and report back to the full Governing Body. The two Headteachers and Heads of Sixth Form attend Associated Governors' meetings.

**Experience of Joint Governance:** Relationships between Governing Bodies and Leadership teams are positive: there is a shared sense of purpose underpinned by a shared Christian ethos. As the Association functions as a single examination centre, governors are able to evaluate the academic performance of the Association in its entirety, which reduces the potential for divisions.

**If doing it again, would you do it differently in any ways?:** Looking at shared IT infrastructure might be advantageous - but at the time of its inception this was not an issue. We have developed IT connections and shared programmes over the years and the Information Management system is accessible across both sites.

**Future plans?** Increasing opportunities for collaboration between teachers in CPD and both schools are members of the Yorkshire Causeway Schools Trust, which has meant that we work more closely on issues such as Initial Teacher Training, Research and Development and School to School Support.



# BAYVIEW COLLEGE

(Australia)

**Address:** 119 Bentinck Street, Portland, Victoria 3305, Australia

**Mailing Address:** PO Box 256, Portland, Victoria 3305, Australia

**Telephone:** (+61) 3 5523 1042

**Email:** [school.contact@bayview.vic.edu.au](mailto:school.contact@bayview.vic.edu.au)

**Website/Social Media:** [www.bayview.vic.edu.au](http://www.bayview.vic.edu.au)



**BAYVIEW**  
A Christian Community College



**Principal:** Dr Michelle Kearney (*photo*)

**Number/Age Range of students:** 195 (aged 12 - 18 years).

**Religious Denominations involved:** A proudly ecumenical christian college, its denominations include, together with the Loreto Sisters, Anglican, Baptist, Catholic, Lutheran, and the Uniting Church in Australia.

**Participating Churches:** Anglican, Baptist, Catholic, Church of Christ, Lutheran, and Uniting.

**Motto:** "To Believe. To Think. To Achieve".

**Date of Foundation as a Joint-Church College:** 1977.

**Prior History:** Founded in 1885, in 1977 Loreto College became an ecumenical, co-educational college - renamed The Christian Community College. In 1996 it changed its name to Bayview College and soon afterwards it became one of the 4 foundation members of the Victorian Ecumenical System of Schools (VESS) and remained a member of this group until the end of 2013.

**Structure of Joint Governance:** The College Board comprises one member from Loreto and each of the six participating Churches, two parent members, two elected members and one-co-opted member. The participating Churches are: Anglican, Baptist, Catholic, Lutheran and Uniting.

The College's Christian Identity Board sub-committee is charged with ensuring the ongoing Christian identity of the College. The Chaplain and Director of Christian Identity, along with representatives of the member churches, work with the Principal on ensuring that our unique Christian ethos is maintained.

**Experience of Joint Governance:** Representatives from the Loreto Institute meet with Bayview College Board members and the College Executive annually to ensure that the College continues to operate according to its constitution.



# BRAEMAR COLLEGE

(Australia)

**Address:** Mt Macedon Road, Woodend, Victoria 3442, Australia

**Telephone:** (+61) 3 5427 2500

**Email:** [registrar@braemar.vic.edu.au](mailto:registrar@braemar.vic.edu.au)

**Website/Social Media:** [www.braemar.vic.edu.au](http://www.braemar.vic.edu.au)

**Principal:** Mr Russell Deer (*photo*)

**Number/Age Range of students:** 935 (aged 10-18 years).

**Religious Denominations involved:** Anglican, Catholic, and Uniting Churches.

**Motto:** “*Unum Corpus Multi Sumus*” (“*One body, many parts*”).

**Date of Foundation as a Joint-Church College:** 1976.

**Prior History:** When a previous school in this locality moved its facilities to a different location, the community came together and created a new school in its stead - Braemar College.

**Structure of Joint Governance:** The College is governed by a 12-member board which includes representatives from the Anglican, Catholic, and Uniting Churches, and of the Parents and Friends Association, and Old Collegians.

**Experience of Joint Governance:** Braemar is a member of the Victorian Ecumenical System of Schools (VESS).

**Future plans:** To be a leading Early Learning to Year 12 co-educational ecumenical school with a reputation for providing an exciting curriculum that stimulates and engages students and enables them to achieve high quality learning outcomes, underpinned by sustainable practices, a global outlook and Christian principles.



**BRAEMAR  
COLLEGE**

[www.braemar.vic.edu.au](http://www.braemar.vic.edu.au)



# CHRIST THE KING COLLEGE

(United Kingdom)

**Address:** Wellington Road, Newport, Isle of Wight, PO30 5QT, UK

**Telephone:** (+44) 1983 537070

**Email:** [admin@christthekingcollege.co.uk](mailto:admin@christthekingcollege.co.uk)

**Website/Social Media:** [www.christthekingcollege.co.uk](http://www.christthekingcollege.co.uk)



**Headteacher:** Mr Kevin McDermott

**Number/Age Range of students:** 1,606 students aged 11-18 years.  
Admissions Number: 270.

**Religious Denominations involved:** Anglican and Roman Catholic.

**Sponsoring Churches/Dioceses:** Church of England Diocese of Portsmouth and the Roman Catholic Diocese of Portsmouth.

**Motto:** *"Via Veritas Vita". ["I am the Way, the Truth, the Life"]*.

**Date of Foundation as a Joint-Church College:** 2008

**Prior History:** The College was formed by the successful amalgamation in 2008 as a 9-14 year school, of two popular Middle Schools - Archbishop King Roman Catholic Middle School and Trinity Church of England Middle School. In September 2013 it became a full 11-19 year school..

**Structure of Joint Governance:** The College is founded on a formal 'ethos statement', agreed by the two Dioceses, which defines the nature and purpose of the college.



# CHRIST THE KING PRIMARY SCHOOL

(United Kingdom)

**Address:** Fir Grove, Macclesfield, Cheshire, SK11 7SF, United Kingdom

**Telephone:** (+44) 1625 383272

**Email:** [admin@christtheking.cheshire.sch.uk](mailto:admin@christtheking.cheshire.sch.uk)

**Website/Social Media:** [www.christtheking.cheshire.sch.uk](http://www.christtheking.cheshire.sch.uk)



**Head Teacher:** Ms Claire Gurden BA (Hons) QTS NPQH.

**Number/Age Range of students:** 113 pupils (aged 3-11 years). Admission Number: 30 - 18 places for Catholic children and 12 places for Church of England children.

[As at Dec 2016:- 62 pupils were Catholic; 16 Anglican; 29 other Christian; 13 other Faiths; 60 No stated religious Affiliation].

**Religious Denominations involved:** Various Christian and other Faiths. (See preceding).

**Sponsoring Churches:** Roman Catholic Diocese of Shrewsbury and Church of England Diocese of Chester.

**Motto:** "Live Life to the Full"

**Date of Foundation as a Joint-Church School:** 2011.

**Prior History:** The school was created through the joining of St Barnabas CoFE Primary School and St Edwards Catholic Primary.

**Structure of Joint Governance:** The school is Voluntary Aided, jointly operated by the Catholic Diocese of Shrewsbury and the Anglican Diocese of Chester.

**Experience of Joint Governance:** Our creation in 2011 reflects the values at the heart of our school community; that we share common beliefs but that we also respect, recognise and truly celebrate diversity and difference.





# DOANE STUART SCHOOL

## (USA)

**Address:** 199 Washington Avenue, Rensselaer, NY 12144, USA

**Telephone:** (+1) 518.465.5222

**Email:** [cstodghill@doanestuart.org](mailto:cstodghill@doanestuart.org)

**Website/Social Media:** [www.doanestuart.org](http://www.doanestuart.org)



**Head of School:** Mr Cecil F Stodghill (*photo*)

**Number/Age Range of students:** 250 from Nursery to Grade 12 (aged 3-18 years).

**Religious Denominations involved:** Episcopalian + Catholic. All faiths are celebrated and studied

**Sponsoring Churches:** The school is independent of both denominations, but with representatives of both on the Board of Trustees

**Date of Foundation as a Joint-Church School:** 1975.

**Prior history:** Doane Stuart was formed in 1975 by the merger of Kenwood Academy (a Catholic school founded in 1852 by the Society of the Sacred Heart), and St Agnes School (an Episcopal school founded in 1870). The new merged school took its name from Bishop Doane, the founder of St Agnes School, and Mother Stuart, the founder of the Catholic Sacred Heart Society, - thus Doane Stuart.

**Structure of Joint Governance:** Board of Trustees of both faiths

**Experience of Joint Governance:** Very Successful



# EMMAUS CATHOLIC AND CHURCH OF ENGLAND PRIMARY SCHOOL

(United Kingdom)

**Address:** Southend Road, Sheffield, S2 5FT, United Kingdom

**Telephone:** (+44) 114.276.6474

**Email:** [enquiries@emmaus.sheffield.sch.uk](mailto:enquiries@emmaus.sheffield.sch.uk)

**Website/Social Media:** [www.emmaus.sheffield.sch.uk](http://www.emmaus.sheffield.sch.uk)

**Twitter:** sheffieldemmaus



**Headteacher:** Mrs Helen Simmerson.

**Number/Age Range of students:** 347 pupils aged 3-11 years. The Nursery has 52 part time places. (26 in the morning and 26 in the afternoon).

**Religious Denominations involved:** Catholic and Anglican.

**Sponsoring Churches:** Roman Catholic Diocese of Hallam and the Church of England Diocese of Sheffield.

**Date of Foundation as a Joint-Church School:** 1 August 2014.

**Structure of Joint Governance:** The school is one of four primary academies in South Yorkshire managed by the Hallam Schools' Partnership Academy Trust. The Bishop of Hallam and the Bishop of Sheffield appoint a minimum of eight Foundation Governors – four from each diocese – comprising a majority of the Governors.



# EMMAUS CHURCH OF ENGLAND AND CATHOLIC PRIMARY SCHOOL

(United Kingdom)

**Address:** Fir Tree Drive South, Croxteth Park, Liverpool, L12 0JE, United Kingdom

**Telephone:** (+44) 151 233 1414

**Email:** [emmaus-ao@emmaus.liverpool.school.uk](mailto:emmaus-ao@emmaus.liverpool.school.uk)

**Website/Social Media:** [www.emmausprimaryschool.co.uk](http://www.emmausprimaryschool.co.uk)



**EMMAUS**  
Church of England &  
Catholic Primary School

**Principal:** Mr Alan Williams

**Number/Age Range of Pupils:** 486 Primary and 60 Nursery places. 3 - 11 year of age.

**Religious Denominations involved:** Church of England and Roman Catholic.

**Sponsoring Churches:** Anglican Diocese of Liverpool and the Catholic Archdiocese of Liverpool.

**Motto:** The school logo is a cross in a scallop shell: the sign of Christ within an ancient symbol of pilgrimage - a physical and spiritual journey.

**Date of Foundation as a Joint-Church School:** September 1997.

**Prior History:** This new school in a new development area was approved by Archbishop Derek Warlock and Bishop David Sheppard. They wanted it to happen for ecumenical reasons. It was the outcome of a working group set up by the two churches in 1992. The official opening had the participation of the Archbishop of Liverpool Patrick Kelly and Bishop of Warrington John Packer.

**Structure of Joint Governance:** Both dioceses share responsibility. 15% of the funding came from the dioceses.

**Experience of Joint Governance:** *“Emmaus was the first school opened for no other reason than the desire to have a joint church school”.*

*“We have not diluted the teaching of either church; it’s not a religious ‘soup’ where we take an easy line. People listened to each other and were totally sensitive to each other. We decided it was the responsibility of the Catholics in the school to ask themselves ‘what do I need to do to make this work for the Church of England people, and vice versa ...”*

**If doing it again, would you do it different in any ways?** *“Liverpool has been a fairly sectarian city in its past; but because of the bond between the two bishops and cathedrals it was felt to be good work; there has not been the slightest jot of trouble”.*

**Future plans:** *“With more funding we will welcome others from other traditions”.*

# EMMAUS COLLEGE

(Australia)

**Address:** 48 East Street, Jimboomba, QLD 4280, Australia

**Postal Address:** PO Box 539, Jimboomba, QLD 4280, Australia

**Telephone:** (+61) 75547.9990

**Email:** [psjimboomba@bne.catholic.edu.au](mailto:psjimboomba@bne.catholic.edu.au)

**Website/Social Media:** [www.emmausjimboomba.qld.edu.au](http://www.emmausjimboomba.qld.edu.au)

**Principal:** Mr Kevin Schwede

**Number/Age range of students:** 1,403 students (Kindergarten to Year 12).

**Religious denominations involved:** Catholic, Anglican, Lutheran, Uniting.

**Sponsoring Churches/Dioceses:** Catholic, Anglican, Lutheran, Uniting.

**Vision:** "Excellence in learning within a contemporary Christian community".

**Date of Foundation as a Joint-Church College:** 2002 as a Primary School. In 2005 the school became known as Emmaus College and in 2006, when the primary school had over 400 pupils, a secondary component was opened.

**Prior History:** Initially the parish priest of Brown's Plains approached the director of Brisbane Catholic Education, to assist in and sponsor an ecumenical school in the Jimboomba area in partnership with the local Anglican, Lutheran and Uniting communities.

**Structure of Joint Governance:** The College Board has representatives of the four sponsoring churches.



# FAITH PRIMARY SCHOOL

(United Kingdom)

**Address:** Prince Edwin Street, Liverpool, L5 3LW, United Kingdom

**Telephone:** (+44) 151.233.5092

**Email:** [ao@faithprimaryschool.co.uk](mailto:ao@faithprimaryschool.co.uk)

**Website/Social Media:** [www.faithprimary.co.uk](http://www.faithprimary.co.uk)

**Twitter:** @PrimaryFaith



**Headteacher:** Miss Sarah Williams (*photo*)

**Number/Age Range of pupils:** 192 pupils (aged 3-11 years). Admissions number: 30.

**Religious denominations involved:** Roman Catholic and Church of England.

**Sponsoring Churches:** The Anglican Diocese of Liverpool and the Catholic Archdiocese of Liverpool

**Motto:** "Loving and Learning in the Light of the Lord".

**Date of Foundation as a Joint-Church School:** 1 Sept 2004.



# GAELSCOIL SHLÍ DÁLA

(Ireland)

**Address:** An Bealach Mór, Buirios Mór Osraí, Co. Laoise, Ireland

**Telephone:** (+353) 505 41810

**Email:** [slighdala@eircom.net](mailto:slighdala@eircom.net)

**Website/Social Media:** [www.slidala.ie](http://www.slidala.ie)



**Principal:** Ms Róise Uí Chnaimhín

**Number/Age Range of students:** 46 pupils (24 girls & 22 boys) aged 3-12 years.

**Religious Denominations involved:** The Anglican and Catholic Churches.

**Sponsoring Churches:** The Church of Ireland Diocese of Limerick & Killaloe and The Catholic Diocese of Killaloe.

**Date of Foundation as a Joint-Church School:** 1 September 2005.

**Prior History:** The venture began as a result of a local community survey in September 2002. One of the priorities was the re-opening of the Ballaghmore Primary School which had been closed since 1984. The consensus of the committee was to establish an (Irish-medium) Gaelscoil as the option of having a child educated through the Irish language was not currently available in that area. As the elected local committee members were representative of both Christian denominations in the parish, it was important that the religious ethos would reflect this. Bishops Walsh and Mayes were approached to act as joint patrons of the school and the committee were delighted with the enthusiasm and encouragement that the bishops gave to the endeavour.

**Structure of Joint Governance:** It was the first ever school in Ireland to be established under the joint patronage of the two main Christian denominations.

# GRADUATE THEOLOGICAL UNION (USA)



GTU is a unique institution – a consortium of more than 20 separate institutions that comprise 10 faith traditions. In 1962 five Protestant seminaries formed the union. In 1964 they were joined by the Dominican School of Philosophy and Theology; and in 1966 by the Jesuit School of Theology at Berkeley.



**Address:** 2400 Ridge Road, Berkeley, California 94709, USA

**Telephone:** (+1) 510.649.2400.

**Email:** [info@gtu.edu](mailto:info@gtu.edu)

**Website/Social Media:** [www.gtu.edu](http://www.gtu.edu)

**President:** Dr Uriah Y Kim (*photo*).

**Number/Age range of students:** About 1,000 graduate students.

**Motto:** *“Grow In Knowledge. Thrive in Spirit. Unite in Solutions”.*

**Foundation Date:** 1964.

**Prior history:** Many of the GTU’s constituent seminaries were established at various locations throughout the Bay Area in the early 20th or even the late 19th centuries. In the wake of the formation of the World Council of Churches and the Second Vatican Council, Bay Area seminaries began to form a cooperative degree program. In 1962, agreement between the Berkeley Baptist Divinity School (now the American Baptist Seminary of the West), Episcopal Church Divinity School of the Pacific, Pacific Lutheran Theological Seminary and San Francisco Theological Seminary enabled the incorporation of the Graduate Theological Union that year. In 1964 the Dominican School of Philosophy and Theology joined the GTU consortium; and in 1966, the Jesuit School of Theology at Berkeley.

**Experience of Joint Governance:** In 1969, the individual libraries of the seminaries were merged into GTU’s common library. The GTU’s in-house academic journal is *Berkeley Journal of Religion and Theology* - with all issues available free online.

**Future plans?:** *“The GTU is at root an adventure in faith: faith in one another, faith in the future, and faith in God. The GTU is a unique community, formed from a series of covenants, agreements and contracts. Remarkable things have happened in the GTU, there is much unfinished business underway, and there are possibilities as yet unexplored”.* Claude Welch, Annual Report of the Dean & President: 15 Sept 1973.



# HIGHVIEW COLLEGE (Australia)



**Address:** 21 Kars Street, Maryborough, Victoria 3465, Australia

**Telephone:** (+61) 3 5459 1000

**Email:** [highview@highview.vic.edu.au](mailto:highview@highview.vic.edu.au)

**Website/Social Media:** [www.highview.vic.edu.au](http://www.highview.vic.edu.au)



**Principal:** Ms Melinda Scash (*photo*)

**Number/Age Range of students:** 500+ students (aged 12-18 years).

**Religious Denominations involved:** The spiritual heart of Highview College was forged through the collaboration of four Maryborough Churches in the 1970s. Our ties remain close and each of the Church representatives participates in leading us in prayer and reflection at our School Assemblies. Catholic Church: Fr John Monaghan; Church of Christ: Pastor Andrew Deane; Anglican Church: Rev Canon Heather Blackman; and Uniting Church: Glenda Rowland. These four are also their church representatives on the 7-member Board of Directors of the College.

**Sponsoring Churches:** The Anglican Church, Catholic Church, Church of Christ, and Uniting Church.

**Motto:** "Education through Wholeness".

**Date of Foundation as a Joint-Church College:** February 1974.

**Any prior history:** The Brigidine Convent and St Joseph's College opened at Maryborough in 1902. In 1972 Canon John Leaver, Anglican Rector of Christ the King Church discussed with Fr Peter Claridge, of the Roman Catholic Church, the possible founding of an ecumenical school. By 1973 with support of the Bishop of Ballarat, the Superior of the Brigidine Congregation, and other Anglican and Protestant church leaders, the Methodist and Church of Christ churches also joined the interim Board. The Christian Community College opened its doors on the St Joseph's site in February 1974, with 126 students, the first completely ecumenical school in Australia. In 1990 the name Highview was added to the College title.

**Structure of Joint Governance:** The 12-member Board of Directors includes four Church representatives: The Catholic Church, Church of Christ, Anglican Church, and Uniting Church. In 1997 Highview College became a foundation member of VESS, the Victorian Ecumenical System of Schools.

**Experience of Joint Governance:** Highview College embraces its Christian value at the heart of the School, forged through the profound foundational co-operation and wisdom of four Maryborough Churches. In this way our ecumenical school is one where our Whole Living program is at the heart of the learning, values and principles we espouse and, secondly, that we promote Christian Unity and respect throughout our School.

**Future plans:** The 2016 Highview College Master Plan prioritised 15 projects – Short Term, Mid Term and Long Term. Three have been completed. One is in progress. Three have evolved. Mid and Long Term projects are in plan. The school website details these.





# HOLY FAMILY RC and CE COLLEGE

## (United Kingdom)

**Address:** Pot Hall, Wilton Grove, Heywood, Rochdale, Greater Manchester, OL10 2AA, United Kingdom

**Tel:** (+44) 1706 360607

**Email:** [admin@hfch.co.uk](mailto:admin@hfch.co.uk)

**Website/Social Media:** [www.hfch.co.uk](http://www.hfch.co.uk)



**Headteacher:** Mrs Karen Ames.

**Number/Age Range of students:** 719 students aged 11-16 years. Admissions Number 150 (with each denomination having priority for 75 of these places).

**Religious Denominations involved:** Anglican and Roman Catholic.

**Sponsoring Churches:** The Church of England Diocese of Manchester and Roman Catholic Diocese of Salford.

**Motto:** *“Ut Unum Sint”. [“That they may be One”].*

**Date of Foundation as a Joint-Church College:** 1 September 2007.

**Prior history:** The College emerged from the successful joint working party set up in 2003 to look at the possibility of the small St Joseph’s Roman Catholic High School becoming a joint Catholic-Anglican high school. *“The working party addressed issues of governance, staffing, student admissions, religious education and worship. It worked with great enthusiasm, and realised that the two denominations had more common elements that united them, than differences that divided them”.* The new College was opened by both bishops on 20 September 2007.

**Structure of Joint Governance:** The two Churches appoint a majority of the members of the College’s Governing Body.



# HOLY SPIRIT CATHOLIC AND CHURCH OF ENGLAND PRIMARY SCHOOL

(United Kingdom)

**Address:** Gardenside, Leasowe, Wirral, Merseyside, CH46 2RP, United Kingdom

**Telephone:** (+44) 151.638.5180

**Email:** [schooloffice@holyspirit.wirral.sch.uk](mailto:schooloffice@holyspirit.wirral.sch.uk)

**Website/Social Media:** [www.holyspiritwirral.com](http://www.holyspiritwirral.com)



**Headteacher:** Mrs Joanne Cartmell

**Number/Age Range of students:** 200 pupils aged 3-11 years.

Admissions Number: 30 (18 places for Catholic children and 12 places for Church of England children).

**Religious Denominations involved:** Catholic and Anglican.

**Sponsoring Churches:** Catholic Diocese of Shrewsbury and Church of England Diocese of Chester.

**Motto:** *"Love tenderly, act justly and walk humbly with God"* [Micah 6:8].

**Date of Foundation as a Joint-Church School:** 2010.

**Prior History:** Following discussion between the Catholic and Church of England dioceses, Our Lady of Lourdes Catholic Primary School (1963) closed and the new joint-church Holy Spirit School opened.

**Structure of Joint Governance:** The school is under the joint trusteeship of the Dioceses of Shrewsbury and Chester.

**Experience of Joint Governance:** We are well supported by Fr John Feeny and Reverend Graham Cousins – they are active members of our community and regular visitors to our school.



# HOLY TRINITY ACADEMY

(United Kingdom)

**Address:** Teece Drive, Priorslee, Telford, Shropshire, TF2 9SQ, UK

**Telephone:** (+44) 1952 386100.

**Email:** [enquiries@holytrinity.academy](mailto:enquiries@holytrinity.academy)

**Website/Social Media:** [www.holytrinity.academy](http://www.holytrinity.academy)

**Twitter:** @HTAPriorslee



**Headteacher:** Mr Angus Neal (*photo*).

**Number/Age Range of students:** 721 Students aged 11-18 years. [In 2018, 30% of students were from Christian traditions and 4% from other world faith traditions]. Admission Number: 150 [with up to 90 places for Catholics and Anglicans; and at least 60 "Open Places" for the whole community].

**Religious Denominations involved:** Roman Catholic and Anglican.

**Sponsoring Churches:** Roman Catholic Diocese of Shrewsbury and Church of England Diocese of Lichfield,

**Date of Foundation as a Joint-Church College:** 1 September 2015.

**Prior History:** The Academy replaced Blessed Robert Johnson Catholic College, Wellington, which closed in 2015.

**Experience of Joint Governance:** The Academy was officially opened on 11 January 2016 by Bishop Mark Davies (Catholic Bishop of Shrewsbury) and Bishop Mark Rylands (Anglican Bishop of Shrewsbury). The Academy also welcomes local students from a variety of different religious and cultural backgrounds.



# HOLY TRINITY SCHOOL

(United Kingdom)

**Address:** Carlton Road, Barnsley, South Yorkshire, S71 2LF, United Kingdom

**Telephone:** (+44) 1226 704550

**Email:** [info@holytrinitybarnsley.org](mailto:info@holytrinitybarnsley.org)

**Website/Social Media:** [www.holytrinitybarnsley.org](http://www.holytrinitybarnsley.org)



**Principal:** Mrs Lissa Oldcorn.

**Number/Age Range of students:** c1,127 students (aged 3-16 years):

A 2x26-place Nursery; a 420-place Primary Phase; and a 700-place Secondary Phase.

**Religious Denominations involved:** Anglican and Roman Catholic.

**Sponsoring Churches:** The Church of England Diocese of Leeds and the Roman Catholic Diocese of Hallam.

**Date of Foundation as a Joint-Church School:** September 2012.

**Prior History:** Holy Trinity School came about from a merger of St Michael's Catholic & Church of England High School; St Dominic's Catholic Priory; and Holy Cross Deanery (CofE) Primary. It is a member of the Hallam Schools' Partnership Academy Trust.



# HOPE ACADEMY

(United Kingdom)

**Address:** Ashton Road, Newton-le-Willows, St Helens, Merseyside, WA12 0AQ, United Kingdom

**Telephone:** (+44) 1744.671930.

**Email:** [hopeacademy@sthelens.org.uk](mailto:hopeacademy@sthelens.org.uk)

**Website/Social Media:** [www.hopeacademy.org.uk](http://www.hopeacademy.org.uk)

**Principal:** Patrick Ferguson (*photo*)

**Number/Age Range of students:** The Academy has 1,082 students (aged 11-18 years). Admission Number: 270. In Sept 2019 it admitted 311 new pupils.

**Religious Denominations involved:** Roman Catholic and Anglican.

**Sponsoring Churches:** The Academy has three sponsors: the Catholic Archdiocese of Liverpool; the Church of England Diocese of Liverpool; and Liverpool Hope University (an ecumenical university with its own separate listing in this Directory).

**Date of Foundation as a Joint-Church Academy:** September 2011.

**Prior History:** The Academy merged the previous Newtown Community High School and St Aeldred's Catholic Technology College.

**Structure of Joint Governance:** The 13-member Board of Governors has seven representatives of the Diocese and Archdiocese.

**Experience of Joint Governance:** The Denominational Inspection of the Academy in 2018 found it to be "Outstanding".



# HOPE PRIMARY SCHOOL

(United Kingdom)

**Address:** Lordens Road, Huyton, Knowsley, Liverpool, L14 8UD, United Kingdom

**Telephone:** (+44) 151 477 8300

**Email:** [hope.primaryschool@knowsley.gov.uk](mailto:hope.primaryschool@knowsley.gov.uk)

**Website/Social Media:** [www.hopeprimary.com](http://www.hopeprimary.com)



**Headteacher:** Mr John Casson

**Number/Age Range of pupils:** 405 pupils (aged 3-11 years). Admissions Number: 60.

**Religious denominations involved:** Catholic and Church of England.

**Sponsoring Churches:** Church of England Diocese of Liverpool and Roman Catholic Archdiocese of Liverpool.

**Date of Foundation as a Joint-Church School:** April 2011.

**Structure of Joint Governance:** Both Churches appoint members to the School Governing Body, whose policies include *“to monitor and maintain the distinctive Christian ethos and values of the school”*.



# JOHN PAUL COLLEGE

## (Australia)

**Address:** John Paul Drive, Daisy Hill, Queensland 4127, Australia

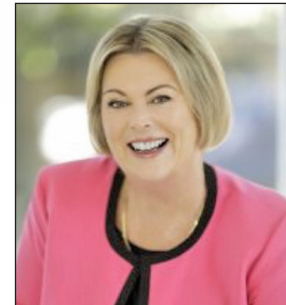
**Telephone:** (+61) 7 3826 3333.

**Email:** (via the College website).

**Website/Social Media:** [www.jpc.qld.edu.au](http://www.jpc.qld.edu.au)



**John Paul College**  
Unity | Christ | Learning



**Principal:** Mrs Karen Spillar OAM (*photo*)

**Number/Age Range of students:** 1,634 students [in 2019]. The Campus has four separate but adjacent schools: Early Learning, Primary School, Middle School, and Senior School. Its Boarding Village provides places for 48 students. It also operates a Homestay Programme for students living away from home during the academic year.

**Religious Denominations involved:** *“As Queensland’s first ecumenical school, we affirm the individuality of our traditions as envisioned by our founding fathers from the local Roman Catholic, Anglican and Uniting parishes”.*

**Sponsoring Churches:** The four founders were Fr Rollo Enright, Catholic parish priest; Fr Leo Burke, Catholic parish priest; Fr Patrick Doulin, Anglican parish priest; and Rev Bryan Gilmour, Uniting Church pastor. All four were strong believers in ecumenism, which continues to guide the College to this day. Fr Leo Burke remains involved with the College to this day as its Patron.

**Motto:** “Unity Christ Learning”.

**Date of Foundation as a Joint-Church College:** 26 January (Australia Day) 1982.

**Structure of Joint Governance:** John Paul College is a Christian Ecumenical college. This means, firstly, that Christ and the Christian message is at the centre of the teachings, values and principles we espouse and, secondly, that we promote Christian Unity - that is, a united witness to the Good News of Jesus.

**Experience of Joint Governance:** Christian Ecumenism recognises that people from different Christian faiths and traditions can work together towards greater unity while each preserves his or her traditional faith and practice. We do not seek any change in practice which would be ahead of that recognised by the authority of the individual churches, but promote adherence by every church member to the laws, traditions and authority of his/her church while seeking that unity which was Christ’s prayer.

**Future Plans:** Our “Strategic Intent: Towards 2022” document can be seen on our College website: [www.jpc.qld.edu.au](http://www.jpc.qld.edu.au)



# JUBILEE PRIMARY SCHOOL

(Australia)

**Address:** 34 Manra Way, Pacific Pines, Queensland 4211, Australia

**Telephone:** (+61) 75502 8566

**Email:** [pgaven@bne.catholic.edu.au](mailto:pgaven@bne.catholic.edu.au)

**Website/Social Media:** [www.jubileeprimary.qld.edu.au](http://www.jubileeprimary.qld.edu.au)



**Principal:** Mr Matt Edwards (*photo*)

**Number/Age Range of students:** 596 pupils (aged 6-11 years).

**Religious Denominations involved:** St Mary's Catholic Community, Coomera; Southland International - Apostolic Australia Church; Gold Coast North Anglican Church; and Living Rivers Uniting Church and New Life Uniting Church.

**Sponsoring Churches:** Jubilee Primary School is "a living vision of local churches".

**Motto:** "Faith Learning Unity".

**Date of Foundation as a Joint-Church School:** 2001.

**Prior History:** The "Local Covenant" reaffirming our belief that the visible unity in the life and mission of all Christ's people is the will of God, was signed on 20 May 2001 by four local ministers of the Catholic, Anglican, Apostolic and Uniting Churches.

In May 1994 a Leadership Fellowship group formed comprising Anglican, Catholic, Uniting, Presbyterian, Assembly of God, Lutheran, Baptist, and Reach Out for Christ communities. In November 1994 a Collaborative Ministers Fraternal was established; and through prayer, friendship, study and working together as much as possible, arose the vision of an ecumenical school at Coomera and, in time, a joint worship centre. In February 1996 an Ecumenical Planning Group was created with two representatives from each of the three participating churches - the Anglican, Catholic and Uniting communities; joined in 1996 by the Father's Heart Apostolic Church. In 1999 these four local faith traditions formed the foundation of the School Steering Committee.

**Structure of Joint Governance:** *Ecumenism involves a profound encounter where both what Christians have in common and what keeps them apart, is acknowledged in the relationship or the collaborative activity and dealt with in some way. The goal in this case is not just collaboration but furthering the restoration of unity between the divided Christian communities. ...*

*Therefore, ecumenical is not the opposite of being Catholic or Anglican or Uniting or Apostolic but presupposes it. If a school were genuinely ecumenical, it would be Catholic and Anglican and Uniting Church and Apostolic at the same time. In other words, representatives of all of those Christian communities would be truly and fully and openly themselves as part of the ecumenical reality. (from "Catholic Schools and Ecumenism" by Bishop Michael Putney)*

**Experience of Joint Governance:** During this time of journeying together, we have lived ecumenism. We respect each other's traditions, while retaining our own tradition. We embrace diversity through dialogue and we do what we can together in unity. We seek to exercise our Spiritual Gifts to further God's Kingdom in the community. We hold fast to that which is central to us all - our shared belief in Jesus Christ, his life, ministry, death and resurrection. We seek to proclaim the Gospel message in mission and unity to the wider community through the Jubilee Primary School.



# LIVERPOOL HOPE UNIVERSITY

(United Kingdom)

**Address:** Hope Park, Liverpool, L16 9JD, United Kingdom

**Telephone:** (+44) 151 291 3000.

**Email:** [enquiry@hope.ac.uk](mailto:enquiry@hope.ac.uk)

**Website/Social Media:** [www.hope.ac.uk](http://www.hope.ac.uk)



**LIVERPOOL HOPE  
UNIVERSITY**

**Vice Chancellor:** Prof Gerald J Pillay (*photo*)

**Number/Age Range of students:** 5,296. [3,910 undergraduate/1,386 postgraduate].

**Religious Denominations involved:** Anglican and Roman Catholic.

**Sponsoring Churches:** The Church of England Diocese of Liverpool and The Roman Catholic Archdiocese of Liverpool.

**Motto:** *"Hope to All who Need It"*.

**Foundation Date as a Joint-Church College:** 1979 as "Liverpool Institute of Higher Education"

In July 2005 the Institute secured full university status and became Liverpool Hope University.

**Prior History:** In 1979 Liverpool Institute of Higher Education was formed by St Katharine's Anglican college 1844; the Sisters of Notre Dame's Catholic college 1856; and Christ's College 1964. The shared vision of Bishops David Sheppard and Derek Worlock contributed significantly to the new institution. In 2005 it became Liverpool Hope University College, with new seriousness about its ecumenical spirit.

**Structure of Joint Governance:** The Catholic and Anglican bishops are the presidents and nominate some members to the Governing Council. The University's only reserved positions are the Rector, who has to be Catholic or Anglican, and the two chaplains. In addition to the Governing Council both Anglicans and Catholics have boards of trustees. There is daily ecumenical prayer; regular celebration of eucharist in both traditions; and ecumenical services punctuated throughout the year. There is also a weekly foundation hour where the timetable stops and there is a mission-oriented activity".

**Experience of Joint Governance:** Prof John Sullivan, former Professor of Christian Education, said in 2007: *"I see places like ours as one of the places where the church does its thinking ... the church needs it. Secondly the church has a great deal to offer in terms of a worldview and a spirituality and a wholeness to challenge higher education not to be hijacked by the idols of measurement ... The Church says there's more to life than the budget. As for specific benefits to the joint church relationship – the discipline of knowing that you have a very mixed audience is a salutary one ... we should only do apart those things that we can't do together. The Church in Britain has not been really serious about ecumenism – it's only been blandly supportive. ... God's work is not restricted to the institutional church ... It is an extremely beneficial work to know other traditions so we can know ourselves better."*

**Any future plans?** 175 years old, Liverpool Hope University looks to the future with extensive capital development and it offers degrees in a wealth of disciplines.



# ST BEDE'S INTER-CHURCH SCHOOL

## (United Kingdom)

**Address:** Birdwood Road, Cambridge, CB1 3TD, United Kingdom

**Telephone:** (+44) 122 356 8816

**Email:** [office@stbedes.cambs.sch.uk](mailto:office@stbedes.cambs.sch.uk)

**Website/Social Media:** [www.st-bedes.org.uk](http://www.st-bedes.org.uk)



**Headteacher:** Mr Alistair Day (*photo*)

**Number/Age Range of students:** 852 pupils (aged 11-16 years).

**Religious Denominations involved:** Anglican and Roman Catholic.

**Sponsoring Churches:** The Church of England Diocese of Ely and Roman Catholic Diocese of East Anglia.

**Motto:** "Cum Deo" ("With God").

**Date of Foundation as a Joint-Church School:** 1988.

**Any prior history:** St Bede's was originally founded in 1962 as a Catholic school.

**Structure of Joint Governance:** It became an Academy in March 2012.

**Experience of Joint Governance:** *"The sorts of problems that we have had to overcome have not been anything like as difficult as it might have seemed at first. When you actually sit down and have a cup of tea and start talking you find that you have the commonality of a love for God and a love for children; and it is perfectly possible to sustain everything that you hold to be true without needing to be in a different building and a different system":* Head Teacher Jan Hunt: 2007.

The 2013 OFSTED Inspection Report and the 2016 Denominational Report both rated the school as "outstanding".

**Future Plans:** The school is expanding to accommodate 900 pupils with additional science classrooms, assembly hall and expanded canteen.



# ST BEDE'S SCHOOL

(United Kingdom)

**Address:** 64 Carlton Road, Redhill, Surrey, RH1 2LQ, United Kingdom

**Telephone:** (+44) 1737 212108.

**Email:** [info@st-bedes.surrey.sch.uk](mailto:info@st-bedes.surrey.sch.uk)

**Website/Social Media:** [www.st-bedes.surrey.sch.uk](http://www.st-bedes.surrey.sch.uk)



**Headteacher:** Mr Adam Powell (*photo*)

**Number/Age Range of students:** c1,800 boys and girls of all abilities (aged 11-18 years).

**Religious Denominations involved:** Anglican, Roman Catholic and Free Churches.

**Sponsoring Churches:** Catholic Diocese of Arundel & Brighton; and Anglican Diocese of Southwark.

**Date of Foundation as a Joint-Church School:** 1976. (In 1992 the local Free Churches joined as partners).

**Prior history:** In 1975 neither the small Church of England Bishop Simpson School nor the small Catholic St Joseph's School was considered to be viable. The governing bodies of both schools submitted a proposal for a joint church school. According to the head teacher, "*after a lot of persuasion, then it happened*". The new amalgamated St Bede's School was opened by Bishop (subsequently Cardinal) Cormac Murphy-O'Connor, who continued to support it along with the Church of England Bishop of Southwark.

**Structure of Joint Governance:** St Bede's is unique in the UK as the only state-funded school where Anglicans, Roman Catholics and the Free Churches are bound together in a formal ecumenical partnership. Like all church state schools in England & Wales, the government expects the church community to provide 10% of all the school's building and maintenance costs. This 10% mainly comes from the pupils' churches (suggested by the dioceses as £25 per child annually) and from their parents.

The School has a Roman Catholic chaplain and an Anglican chaplain.

The admissions policy provides 220 places per year for Anglicans and Catholics - in practice close to 50% of each; 40 places for students from the Free Churches; and 10 places on the basis of "pressing need" for students who may not have any Church affiliation - some in most years are Muslim, Jewish or Hindu.

**Experience of Joint Governance:** The December 2017 church inspection judged the school "Outstanding". Likewise OFSTED in January 2017 found every aspect of the School "Outstanding". "*There's an awful lot that isn't consciously ecumenical, it's just the way we do it. In the lower school there is some time given over to denominational groups. We have services of all the churches involved, and ecumenical chaplaincy, etc. Being a joint school, that does not imply a watering down of anybody's faith... what shines through is the strong common Christianity. ... We can say to both communities they are getting everything, perhaps a bit differently, but plus the richness of the ecumenical experience. This is about the whole of the Catholic and the Anglican experience in the school.*"

# ST CHAD'S CATHOLIC AND CHURCH OF ENGLAND HIGH SCHOOL

(United Kingdom)



**Address:** Grangeway, Runcorn, Cheshire, WA7 5YH, United Kingdom

**Telephone:** (+44) 1928 564106.

**Email:** [admin@st-chads.co.uk](mailto:admin@st-chads.co.uk)

**Website/Social Media:** [www.st-chads.co.uk](http://www.st-chads.co.uk)



**Headteacher:** Mr James Forber (*photo*)

**Number/Age Range of students:** 638 students (aged 11-19 years).

**Religious Denominations involved:** Catholic and Anglican.

**Sponsoring Churches:** The Catholic Diocese of Shrewsbury and the Anglican Diocese of Chester.

**Motto:** *"Faith in God, Faith in Ability, Faith in Each Other"*.

**Foundation Date as a Joint-Church School:** 1 September 2009.

**Prior History:** St Chad's was previously a Roman Catholic school and, after a major new building programme, the school re-opened as a joint-faith school.

**Structure of Joint Governance:** On 1 April 2019 St Chad's converted to Academy Status - and is now sponsored by the Salopia Catholic Schools Trust.

**Experience of Joint Governance:** The School's "Welcome Prayer" is:

*"Let it be known to all those who enter here  
that Christ is the reason for this school –  
the unseen but ever-present teacher in its classes,  
centre of its mission,  
the inspiration of the whole community".*



# ST COLUMBA COLLEGE

(Australia)

**Address:** 42 President Avenue, Andrew's Farm, Adelaide, South Australia 5114, Australia

**Telephone:** (+61) 8 8254 0600.

**Email:** [admin@stcolumba.sa.edu.au](mailto:admin@stcolumba.sa.edu.au)

**Website/Social Media:** [www.stcolumba.sa.edu.au](http://www.stcolumba.sa.edu.au)

**Principal:** Ms Leanne Carr (*photo*)

**Number/Age Range of students:** 1,400+ students (aged 5-18 years).  
There is an open enrolment policy, with no specified numbers from either tradition. In practice there have been 25% Anglican, 25% Catholic, 15% from other traditions, and 35% from no stated religious background.

**Religious Denominations involved:** Anglican and Catholic.

**Sponsoring Churches:** The Anglican and Catholic Archdioceses of Adelaide.

**Motto:** "Unity in Faith".

**Date of Foundation as a Joint-Church College:** January 1997.

**Prior History:** The area was being newly developed, with an obvious need for a new school. Both the Anglican and Catholic Archdioceses of Adelaide, South Australia, were keen to establish a school and the area was not big enough for two. So in 1994 successful discussions began about a joint venture. In 1995 intensive planning for the College began and in 1996 an Anglican and Catholic Schools Committee was established. June 1996 saw the inaugural Principal, Ms Madeleine Brennan, appointed and in January 1997 the College opened with 207 students. It took the name of St Columba, a celtic saint shared by both traditions.

**Structure of Joint Governance:** Both churches have four nominees on the college's governing council; both archbishops have the final say on the appointment of the principal; and they regularly visit the college. The leadership team is made of people from both traditions. There are two directors of spirituality for the college, one from each tradition.

**In the words of the founding principal:** "We get on really well with each other and we respect each other. It provides the students with a richness of traditions; we work hard not to water down the teaching of either and so stay true to both traditions. In an age when the expenses of running an educational establishment are escalating, integration is cost-effective."

**Experience of Joint Governance:** St Columba College seeks to nurture in our students and the wider community a close relationship with God, a passion for living and a life-long love of learning. The founding principal declared in 2007: "We see the college as a place of evangelisation. Even among the 50% who regard themselves as Anglican or Catholic, there are very few who have a direct link with a worshipping community. St Columba provides such a link."



# ST CUTHBERT MAYNE SCHOOL

(United Kingdom)

**Address:** Trumlands Road, Torquay, Devon, TQ1 4RN, United Kingdom

**Telephone:** (+44) 1803 328725

**Email:** [admin@stcm.torbay.sch.uk](mailto:admin@stcm.torbay.sch.uk)

**Website:** [www.st-cuthbertmayne.co.uk](http://www.st-cuthbertmayne.co.uk)

**Headteacher:** Mr James Down (*photo*)

**Number/Age Range of students:** 893 students aged 11-18 years.

**Religious Denominations involved:** Catholic and Anglican.

**Sponsoring Churches:** Roman Catholic Diocese of Plymouth and Church of England Diocese of Exeter.

**Mission Statement:** *"Christ is our Cornerstone. Learning is our Focus"*.

**Date of Foundation as a Joint-Church School:** c1975. (Its Sixth Form opened in 1997).

**Prior History:** In 1974 Anglicans wanted a secondary school in this area - and there was already the Catholic St Cuthbert Mayne School which wanted to expand. Agreement was reached between the Catholic Diocese of Plymouth and the Anglican Diocese of Exeter.



**Structure of Joint Governance:** The governing Body reflects the school make up.

**Experience of Joint Governance:** Religious education is at the core of our curriculum and daily worship is an integral part of the life of our community. We do everything we possibly can together, and only separate when it's essential.

*"This School is a beacon of hope for the church and the world"*: Church Inspection Report 2016.



# ST EDWARD'S SCHOOL

(United Kingdom)

**Address:** Dale Valley Road, Poole, Dorset, United Kingdom, BH15 3HY

**Telephone:** (+44) 1202 740950

**Email:** [enquiries@st-edwards.poole.sch.uk](mailto:enquiries@st-edwards.poole.sch.uk)

**Website/social media:** [www.st-edwards.poole.sch.uk](http://www.st-edwards.poole.sch.uk)

**Facebook:** stedwardspoole

**Twitter:** @stedwardspoole

**Principal:** Mr Michael Antram MA(Ed) NPQH (*photo*)

**Number/Age Range of students:** 1,000+ students (aged 11-18 years).

**Religious Denominations involved:** Roman Catholics (34%); Church of England (38%); Other Christian Denominations and faith communities (11%).

**Sponsoring Churches:** Diocese of Plymouth and Diocese of Salisbury

**Date of Foundation as a Joint-Church School:** 30 June 1991.

**Prior History:** The school began as a Catholic secondary school in 1963.

**Structure of Joint Governance:** 3 parent governors, 1 staff governor, 1 Local Authority governor, 2 co-opted governors, 12 foundation governors (appointed by the Bishops of Plymouth and Salisbury)

**Experience of Governance:** The Governing Body share a commitment to a vision of Christian unity, and work collaboratively to that end. There is a mutual respect of Christian traditions, and a recognition that churches are working together in partnership to educate young people.

The school recognises, and is sensitive to diversity within Christian belief and practice, and looks to celebrate that which unites us. The Governing Body is made up of representatives of both clergy and laity from both of the main traditions. They are committed to doing nothing apart, which can be done together.

**Future plans:** The Bishops of Plymouth and Salisbury dedicated a new chapel at the heart of the campus during the week of prayer for Christian Unity in 2018. This enables class liturgies to be reintroduced, as well as serving as a central place of prayer and reflection for students and staff. A new altar/communion table was commissioned and is a focal point for the chapel, as we celebrate the Eucharist within our traditions, united in our discipleship of Jesus Christ. We aim for the school to be an outstanding centre of learning, celebrating our distinctiveness as a joint-church school, through an explicit focus on the spiritual development of each member of our community.



# ST EDWARD'S ROYAL FREE ECUMENICAL MIDDLE SCHOOL

(United Kingdom)

**Address:** Parsonage Lane, Windsor, Berkshire, SL4 5EN, United Kingdom.

*(Information currently being updated)*



# ST FRANCIS CATHOLIC AND CHURCH OF ENGLAND PRIMARY ACADEMY

(United Kingdom)



**Address:** Newport Road, Ventnor, Isle of Wight, PO38 1BQ, United Kingdom

**Telephone:** (+44) 1983 857449

**Email:** [office@stfrancisventnor.net](mailto:office@stfrancisventnor.net)

**Website/Social Media:** [www.stfrancisventnoracademy.org](http://www.stfrancisventnoracademy.org)



**Principal:** Mr Alex Augustus

**Number/Age Range of students:** 236 pupils: 4-11 years of age. Admissions Number: 30.

**Religious Denominations involved:** Catholic and Church of England.

**Sponsoring Churches:** The Catholic Diocese of Portsmouth and the Church of England Education Board of Portsmouth and Winchester.

**Date of Foundation as a Joint-Church School:** 2010.

**Prior History:** In 2010 St Francis Catholic and Church of England Primary School was created by the coming together of three existing schools - one Catholic school and two Church of England schools. In 2017 it became a Primary Academy.

**Structure of Joint Governance:** Since 1 July 2017 the school has been sponsored by The Portsmouth and Winchester Academy Trust

**Experience of Joint Governance:** We are a Catholic and Church of England School, welcoming children of all faiths and of none, promoting tolerance and understanding. Moral and educational values walk hand in hand. Virtues like honesty, charity, trust, respect, diligence and consideration are embedded in the fabric of our school.

# ST FRANCIS XAVIER SCHOOL

(United Kingdom)

**Address:** Darlington Road, Richmond, North Yorkshire, DL10 7DA, UK

**Telephone:** (+44) 1748 823414

**Email:** [contact@sfxschool.org.uk](mailto:contact@sfxschool.org.uk)

**Website/Social Media:** [www.sfxschool.org.uk](http://www.sfxschool.org.uk)



**Headteacher:** Mr Stuart McGhee (*photo*)

**Number/Age Range of students:** 541 (aged 11-16 years). Technically 2/3 of the places are reserved for Catholic pupils and 1/3 for Church of England children, but in practice it's about 50/50 Catholic/Anglican.

**Religious Denominations involved:** Roman Catholic and Church of England. Half of the pupils come from Church of England families and around a third come from Roman Catholic families.



**Sponsoring Churches:** Church of England Leeds Diocese & Roman Catholic Middlesborough Diocese.

**Motto:** "Gratia Perficit Naturam - Grace Perfects Nature".

**Foundation Date as a Joint-Church School:** 1988.

**Prior history:** The original St Francis Xavier School was built in the 1960s as an 11-16 Catholic secondary school. When the Church of England wanted to establish a school in the area in the 1980s, agreement was reached between the Church of England diocese and the Catholic diocese, representatives of which had already wanted to develop diocesan links.

**Structure of Joint Governance:** The school's governing body is 2/3 Catholic, 1/3 Church of England. As the original school was Catholic, the Catholic diocese takes the lead in governance, and the headship is reserved for a Catholic, with the deputy headship being ideally Anglican.

The school is one of the 17 schools in the St Margaret Clitherow Catholic Academy Trust

**Experience of Joint Governance:** Both the Joint Anglican/Catholic Schools Inspection (2018) and the most recent OFSTED inspection found the School to be "Outstanding".

*"The joint faith nature of the school is an essential part of our culture and our community is supported by denominational chaplains; class and school assemblies; full Christian acts of worship throughout the year. A well-attended voluntary Eucharistic service is held each week. Coming together at these times helps us develop a love of our neighbour that we can*

*take from school into our homes and the wider community. Children of other faith backgrounds are very welcome within our school, and this sharing of common beliefs and recognition of differences we hope will develop in our pupils into a tolerance, understanding and respect for all.*

Former headteacher Dr Joe McAuley described the school as "a beacon of Christianity in the area - you need to see it to believe it. ... I appreciate the reluctance that some people have toward joint church education; but if they would come and see just how things work here, it can be done. ... and it is what we have in common which binds us as a community. What we do, we do together".



# ST JOSEPH'S CATHOLIC & ANGLICAN HIGH SCHOOL

YSGOL UWCHRADD GATHOLIG AC ANGLICANAIDD  
SANT JOSEFF

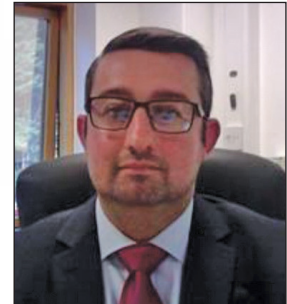
(United Kingdom)

**Address:** Sontley Road, Wrexham, Wales, LL13 7EN, United Kingdom.

**Telephone:** (+44) 1978 360310.

**Email:** [mailbox@st-joseph.wrexham.sch.uk](mailto:mailbox@st-joseph.wrexham.sch.uk)

**Website/Social Media:** [www.st-josephs.wales](http://www.st-josephs.wales)



**Headteacher:** Mr Chris Wilkinson (*photo*)

**Number/Age Range of students:** 732 students (aged 11-16 years). Some 60% of students will be Catholic: 40% Anglican. And children from other faith journeys will always be welcome.

**Sponsoring Churches:** The Roman Catholic Diocese of Wrexham and the Anglican Church in Wales Diocese of St Asaph.

**Motto:** *"I am the way, the truth and the life".*

**Date of Foundation as a Joint-Church School:** September 2006.

**Prior history:** St Joseph's was originally founded in 1958 as a Catholic school, a non-selective state voluntary aided school for boys and girls aged 11-16. In 1972 it became a Comprehensive High School. Discussion of becoming a Joint-Church School began in 2001 when the Anglican Church in Wales's diocese of St Asaph approached the Catholic diocese of Wrexham, proposing that they join forces on education. At that time the Church in Wales had 13 primary schools, but no secondary school. Mr Kenworthy, then headmaster of St Joseph's Catholic High School, observed that *"The more we discussed this option, the more convinced we became that this is the way forward"*. In 2004 the joint Catholic Anglican school was agreed. *"We've tried to keep the best of what St Joseph's has always represented - but carry it through to a new era"*, said Mr Kenworthy. The new joint school has roughly equal numbers of Catholic and Anglican pupils - the first Catholic-Anglican secondary school in Wales.

**Structure of Joint Governance:** The Catholic Bishop of Wrexham, Rt Rev Edwin Regan, said in 2006: *"It is very important that us as Christians should understand and appreciate each other"*.

Anglican Canon Geoffrey Marshall, Rector of Wrexham, said in 2006: *"I hope it will be a sign of a flourishing Christian community in which unity and diversity can be celebrated."*

**Experience of Joint Governance:** John Kenworthy, then headteacher spoke of *"the magical transformation of the heart"* that had occurred as the idea of the new school was discussed. *"The launch of the school affirms that all Christians have a shared journey in Christ,"* he said. *Although we share so much, there are differences in our traditions but the starting point is we respect those differences"*.

# ST JOSEPH'S CATHOLIC AND CHURCH OF ENGLAND PRIMARY

(United Kingdom)

**Address:** Calver Crescent, Staveley, Chesterfield, Derbyshire, S43 3LY, United Kingdom

**Telephone:** (+44) 1246 472798.

**Email:** [info@st-josephsrccofe.derbyshire.sch.uk](mailto:info@st-josephsrccofe.derbyshire.sch.uk)

**Website/Social Media:** [www.st-josephsrccofe.co.uk](http://www.st-josephsrccofe.co.uk)

**Twitter:** @sjs\_staveley



**Headteacher:** Mrs Paula Lowry.

**Number/Age Range of students:** 173 pupils. Ages 4-11 years of age. Admissions Number: 20. (Equal preference is given in admissions to Catholic children and Anglican children).

**Religious Denominations involved:** Catholic and Church of England.

**Sponsoring Churches:** The Catholic Diocese of Hallam and the Church of England Diocese of Derby.

**Date of Foundation as a Joint-Church School:** 1 Sept 2006.

**Structure of Joint Governance:** The school's Governing Body has 13 members. Four Foundation Governors are appointed by the Anglican Bishop of Derby; and four are appointed by the Catholic Bishop of Hallam.

**Experience of Joint Governance:** *"Parish Links: Here at St Joseph's RC CofE we have good links with Saint Columba's, Saint John's and the Annunciation parishes. The vicars and priests are regular visitors within our school and we also visit each church throughout the school year for various celebrations such as Harvest Festival, Christmas, Ash Wednesday, Easter and our end of year service. We also hold mass at our school where both priest and vicar lead, bringing Catholic and Anglican traditions together and celebrating in unison".*



# STANN CREEK ECUMENICAL COLLEGE

## (Belize)

**Address:** Ecumenical Drive, PO Box 84, Dangriga Town, Stann Creek District, Belize, Central America.

**Telephone:** (+501) 522 2114.

**Email:** [scec@btl.net](mailto:scec@btl.net)

**Website/Social Media:** [www.scecumenicalhighschool.edu.bz](http://www.scecumenicalhighschool.edu.bz)



**Principal:** Dr Jeremy Cayetano (*photo*)

**Number/Age Range of students:** c950 (aged 11-17 years).

**Religious Denominations involved:** Catholic, Anglican and Methodist.

**Sponsoring Churches:** Since 1983, at the request of the Ecumenical Commission, the Ministry of Education has taken over responsibility for the College.

**Motto:** *"In pursuit of Academic Excellence"*.

**Date of Foundation as a Joint-Church School:** September 1974.

**Prior History:** When the College, then called Stann Creek Ecumenical High School, opened in September 1974, an era of denominational separation in secondary education had come to an end. For Stann Creek Ecumenical High School was the amalgamation of the former Stann Creek (Anglican) High School and the Austin (Catholic) High School. An Ecumenical Commission comprising the heads of the three major religious denominations – Catholic, Anglican, and Methodist – oversaw the growth of the institution into a regional center of learning for the entire Stann Creek District and beyond.

**Structure of Joint Governance:** By 1983 the Ecumenical Commission requested the Ministry of Education to assume responsibility for the institution. In response to this request a new Board of Governors was appointed, the composition of which underscored its community college character. Subsequent changes to the Board's composition, such as the addition of representatives from the Town Council, business/professional community, Alumni Association, and the Ministry of Education, further enhanced the community college character while still preserving its spirit of ecumenism. In 1986 a Sixth Form Division was established at the request of the Ministry of Education. In 2008 this became a separate Stann Creek Ecumenical Junior College, with the High School its most significant feeder school.

**Experience of Joint Governance:** The consolidation and growth since 1974 exceeded the original concepts and objectives that brought the Ecumenical High School into existence.



# THE BISHOPS' CofE and RC PRIMARY SCHOOL

(United Kingdom)

**Address:** Beardsley Drive, Springfield, Chelmsford, Essex, CM1 6ZQ, United Kingdom

**Telephone:** (+44) 1245 460107.

**Email:** [admin@bishops.essex.sch.uk](mailto:admin@bishops.essex.sch.uk)

**Website:** [www.bishops.essex.sch.uk](http://www.bishops.essex.sch.uk)

**Headteacher:** Mr Greg Waters (*photo*)

**Number/Age Range of students:** 436 pupils (aged 4-11 years). Admissions Number: 60.

**Religious denominations involved:** Anglican and Catholic, and other Christians as well as Muslims and Hindus.

**Sponsoring Churches:** Church of England Chelmsford Diocese and the Roman Catholic Brentford Diocese. (St Augustine's Ecumenical Parish/Church of our Saviour Ecumenical Parish/All Saints' CofE).

**Motto:** *"Live fully, Laugh often, Learn deeply, Love as God loves you ...and Let your Light shine!"*

**Date of Foundation as a Joint-Church School:** 1992.

**Prior History:** The All Saints' Springfield CofE Primary School, founded in 1813, closed and the pupils and staff moved in 1987 to the then new Bishop Wilson Primary School. Subsequent discussions between the Anglican and Roman Catholic bishops agreed a new joint-church school in 1992. It was re-named "The Bishops' Primary School" in recognition of the inspirational role of both Bishops.

**Structure of Joint Governance:** The 13-member Governing Body comprises: 4 Anglican nominees; 4 Roman Catholic nominees; 2 Parents; 1 Local Authority Governor; 2 Staff [including the Headteacher].

**Experience of Joint Governance:** So long as the governors (and the priests) are all on board with the vision of a joint school and how it is different from a single denomination school, it is an incredibly positive and creative experience to work with a group of people committed to an education that can embrace everyone and yet be inspired and fed by its distinctive living Christian tradition.

**If doing it again, would you do it different in any ways?:** *"I'd want there to be some more education in the parishes about the positives of a joint school; I'd like there to be more room for exploring inter-church liturgy eg eucharist; I'd like there to be a rigour about church school inspection so that we knew that inspectors were looking at us 'as a joint church school' and not with one inspector looking at us with one lens, and another through the other denominational lens.*

*"But I think the concept of joint schools is a brilliant one and becomes more essential as polarisation happens in the world. Joint schools are places of understanding, community and reconciliation".*

**Future plans:** We want to develop and continue to explore ways to engage the school community in worship and service which is truly inclusive and which shows the generosity of spirit which is at the heart of our Christian traditions.



# TRINITY SCHOOL

(United Kingdom)

**Address:** Buckeridge Road, Teignmouth, Devon, TQ14 8LY, United Kingdom

**Telephone:** (+44) 1626 774 138

**Email:** [enquiries@trinityschool.co.uk](mailto:enquiries@trinityschool.co.uk)

**Website/Social Media:** [www.trinityschool.co.uk](http://www.trinityschool.co.uk)  
[www.facebook.com/trinityschoolteignmouth](https://www.facebook.com/trinityschoolteignmouth)  
[www.twitter.com/TrinitySeniorSc](https://www.twitter.com/TrinitySeniorSc)  
[www.twitter.com/prepheadtrinity](https://www.twitter.com/prepheadtrinity)



**Headmaster:** Mr Lawrence Coen (*photo*)

**Number/Age Range of students:** 350 students aged 3-19 years.

**Religious Denominations involved:** Anglican and Roman Catholic

**Sponsoring Churches:** Roman Catholic diocese of Plymouth, and Church of England diocese of Exeter.

**Motto:** "Optimism, Confidence and Charity".

**Date of Foundation as a Joint-Church School:** 1979.

**Prior History:** Until 1979 it was a convent school, dating from 1904, until in 1977/78 the Sisters of Notre Dame decided to close the school. As there were not many local options for Christian education, a small group of parents approached the order about buying the school over a 20-year period. They formed a charity and gave a great deal of thought about what form it should take. It was decided to establish a joint Church of England and Roman Catholic school, but to open admissions.

**Experience of Joint Governance:** " ... it was applauded and has worked extremely well..." The name 'Trinity' was chosen to respect the faith and Christian basis of the school. The school maintains close links to the Anglican cathedral in Exeter.



Since 2014, the school has employed a full-time chaplain, a Church of England priest. As well as formal celebrations, chapel and assemblies, his role includes the pastoral care of pupils and staff. The Chaplain and Chaplaincy team work to give all pupils the opportunity to explore the Christian faith as well as being another strand in the pastoral support of pupils.



# UNITY COLLEGE

(Australia)

**Address:** 47 Lomond Crescent, Bellvista Estate, Caloundra West, Queensland 4551, Australia

**Postal Address:** PO Box 3676, Caloundra DC, QLD 4551, Australia

**Telephone:** (+61) 75490 5777

**Email:** [pscaloundra@bne.catholic.edu.au](mailto:pscaloundra@bne.catholic.edu.au)

**Website/Social Media:** [www.uc.qld.edu.au](http://www.uc.qld.edu.au)



**Principal:** Mr Daniel McShea (*photo*)

**Number/Age Range of students:** 1,400+ students (aged 4-18 years).

**Religious Denominations involved:** The Roman Catholic Church and the Uniting Church.

**Sponsoring Churches:** The Uniting and Catholic Communities of Caloundra City.

**Motto:** "Unite~Inspire~Succeed".

**Date of Foundation as a Joint-Church College:** 2006.

**Prior History:** Prior to 2000 the pastors of the Anglican, the Lutheran, the Uniting and the Catholic Churches had identified through collaborative community discussions that the future development of an ecumenical college in Caloundra City was a desired pastoral and educational outcome. Towards the end of 2001 the Anglican and Lutheran pastors withdrew their support for an ecumenical college in Caloundra City as they were establishing stronger links with their own educational facilities. When in 2001 Catholic Pastor Fr John Dobson approached Brisbane Catholic Education to discuss the provision of Catholic schooling within the context of an ecumenical venture in the Caloundra City area a partnership agreement was reached by the Catholic Church and the Uniting Church in Caloundra to pastorally, spiritually and religiously support the creation of an intentionally ecumenical P-12 college. A Steering Committee was established to represent the community in developing the new college.

**Structure of Joint Governance:** Unity College is an Ecumenical College. It is owned and administered by Brisbane Catholic Education, but established as a partnership between the Catholic and Uniting Churches of Caloundra. While in an ecumenical school the ethos or lived expression of the school community's shared core values and beliefs come from the traditions of the participating churches, all students from different faith traditions are welcomed to attend.

**Experience of Joint Governance:** Unity College is not an independent school. In line with our participating churches the College promotes a high quality, inclusive, Christian education. There are two vital dimensions to our religious focus which are the academic teaching of religion as a Learning Area from Prep to Year 12; and the religious life of the school through prayer, social justice, faith formation and religious identity. On applying to Unity College, families are asked about their willingness to embrace the faith experience of both The Uniting Church and Catholic traditions.





# UNIVERSITY OF ROEHAMPTON

(United Kingdom)

**Address:** Grove House, Roehampton Lane, London SW15 5PJ, United Kingdom

**Telephone:** (+44) 20 8392 3000

**Email:** [info@roehampton.ac.uk](mailto:info@roehampton.ac.uk)

**Website/Social Media:** [www.roehampton.ac.uk](http://www.roehampton.ac.uk)

**Vice-Chancellor:** Professor Jean-Noël Ezingeard (*photo*)

**Number/Age Range of students:** 10,205 students: 8,405 undergraduates; and 1,685 postgraduates.

**Religious Denominations involved:** The four Colleges of the university retain their links with The Church of England, The Methodist Church, The Roman Catholic Church, and the Froebel Trust.

**Sponsoring Churches:** Three of the four teacher training colleges from which the University originated were established by the Church of England, the Methodist Church, and the Roman Catholic Church.

**Mottos:** “Part of the Pride” (Digby Stuart College). “Ora, Lege, Obedi - Reflect, Study, Serve” (Whitelands College).

**Date of Foundation as a Joint-Church College:** 1975 as Roehampton Institute; 2004 as Roehampton University.



**Prior history:** Roehampton originated in four 19th century teacher training colleges:- Whitelands College founded by the Church of England in 1841; Southlands College by the Wesleyan Methodist Conference in 1872; and Digby Stuart College by the (Roman Catholic) Society of the Sacred Heart in 1874. Froebel College opened 1892 to train teachers in educational philosophy of Friedrich Froebel.

In 1975 they joined to form the Roehampton Institute which in the 1990s gained degree-awarding powers. In 2000, it was one of the founding institutions of the Federal University of Surrey with the title University of Surrey Roehampton. In August 2004 it gained fully independent university status.

**Structure of Joint Governance:** The “Providing Bodies” for the three church colleges (two churches and a religious society) own the colleges but provide them for the use of the University. They are represented on the University Council and help shape the character, ethos and policies of the University as a whole and of their particular college.. Each college also has a Chaplain.

**Experience of Joint Governance:** The diversity of faith and other traditions lies at the foundation of the University. The Colleges reflect the ethos of their Providing Bodies and each of them links into its own international network of educational institutions.

# APPENDIX 1

## SCHOOLS LISTED BY COUNTRY

### AUSTRALIA

Bayview College, Victoria (1977): 12-18 years.

Braemar College, Victoria (1976): 10-18 years.

Emmaus College, Jimboomba, QLD (2002): Kindergarten-12 years.

Highview College, Maryborough, VIC (1974): 12-18 years.

John Paul College, Daisy Hill, Logan, QLD (1982): 4-18 years.

Jubilee Primary, Pacific Pines, QLD (2001): 6-11 Years.

St Columba College, Andrew's Farm, SA (1997): 5-18 years.

Unity College, Caloundra, QLD (2006): 4-18 years.

### BELIZE

Stann Creek Ecumenical College, Dangriga (1974): 11-17 years.

### IRELAND

Gaelscoil Shlí Dála, Borris in Ossory (2005): 3-12 years.

### UNITED KINGDOM

Academy of St Francis of Assisi, Fairfield, Liverpool (2005): 11-16 years.

Academy of St Nicholas, 51 Horrocks Avenue, Garston, Liverpool (2010): 11-16 years.

Alderley Edge School for Girls, Cheshire (1999): 2-18 years.

All Saints Academy, Cheltenham (2011): 11-18 years.

All Saints Ecumenical Nursery, All Saints CofE School, Putney, London (2000): 3 years.

All Saints Inter-Church Academy, March, Cambridgeshire (1994): 4-11 years.

All Saints Sixth Form College, 51 Horrocks Avenue, Garston, Liverpool (2017): 16-18 years.

Associated 6th Form: St Aidan's CofE High School & St John Fisher Catholic High School, Harrogate (1973): 16-18 years.

Christ the King Joint Catholic & CofE College, Newport, Isle of Wight (2008): 11-18 years.

Christ the King Primary School, Macclesfield (2011): 3-11 years.

Emmaus Catholic & CofE Primary School, Sheffield (2014): 3-11 years.

Emmaus CofE & Catholic Primary School, Croxteth Park, Liverpool (1997): 3-11 years.

Faith Primary School Roman Catholic-Church of England, Liverpool (2004): 3-11 years.

Holy Family RC & CofE College, Rochdale (2007): 11-16 years.

Holy Spirit Catholic & CofE Primary School, Wirral (2010): 3-11 years.

Holy Trinity Academy, Telford, Shropshire (2015): 11-18 years.

Holy Trinity Catholic & CofE School, Barnsley (2012): 3-16 years.

Hope Academy, St Helen's. (2011): 11-18 years.

Hope Primary School, Knowsley (2011): 2-11 years.

Liverpool Hope University, Liverpool (1980): 18+ years.

St Bede's Inter-Church School, Cambridge (1988): 11-16 years.

St Bede's School, Redhill, Surrey (1976): 11-18 years.

St Chad's Catholic & CofE Joint Faith High School, Runcorn (2009): 11-18 years.

St Cuthbert Mayne RC & CofE School, Torquay, Devon (c1975): 11-18 years.

St Edward's RC-CofE School, Poole, Dorset (1991): 11-18 years.

St Edward's Royal Free Ecumenical Middle School, Windsor (1986): 9-13 years.

St Francis Catholic & CofE Primary Academy, Ventnor, Isle of Wight (2010): 4-11 years.

St Francis Xavier's RC-CofE High School, Richmond, N Yorkshire (1988): 11-16 years.

St Joseph's Catholic & Anglican High School, Wrexham, Wales (2006): 11-16 years.

St Joseph's Catholic & CofE Primary School, Staveley (2006): 4-11 years.

The Bishops' RC & CofE Primary School, Chelmsford (1992): 4-11 years.

Trinity School, Teignmouth, Devon (1979): 3-19 years.

University of Roehampton, London (1975): 18+ years.

### UNITED STATES OF AMERICA

Doane Stuart School, Rensselaer, NY. (1975): 3-18 years.

Graduate Theological Union, Berkeley, CA. (1964): Graduate entry.

## APPENDIX 2

### SCHOOLS LISTED BY FOUNDATION DATE: 1964-2017

- Graduate Theological Union, Berkeley, CA, USA (1964).
- Associated 6th Form: St Aidan's CofE High School & St John Fisher Catholic High School, Harrogate, United Kingdom (1973).
- Highview College, Maryborough, VIC, Australia (1974) .
- Stann Creek Ecumenical College, Dangriga, Belize (1974).
- Doane Stuart School, Rensselaer, NY, USA (1975).
- St Cuthbert Mayne RC & CofE School, Torquay, Devon, United Kingdom (c1975).
- University of Roehampton, London, United Kingdom (1975).
- Braemar College, Victoria, Australia (1976).
- St Bede's School, Redhill, Surrey, United Kingdom (1976).
- Bayview College, Victoria, Australia (1977).
- Trinity School, Teignmouth, Devon, United Kingdom (1979).
- Liverpool Hope University, Liverpool, United Kingdom (1980).
- John Paul College, Daisy Hill, Logan, QLD, Australia (1982).
- St Edward's Royal Free Ecumenical Middle School, Windsor, United Kingdom (1986).
- St Bede's Inter-Church School, Cambridge, United Kingdom (1988).
- St Francis Xavier's RC-CofE High School, Richmond, N Yorkshire, United Kingdom (1988).
- St Edward's RC-CofE School, Poole, Dorset, United Kingdom (1991).
- The Bishops' RC & CofE Primary School, Chelmsford, United Kingdom (1992).
- All Saints Inter-Church Academy, March, Cambridgeshire, United Kingdom (1994).
- Emmaus CofE & Catholic Primary School, Croxteth Park, Liverpool, United Kingdom (1997).
- St Columba College, Andrew's Farm, SA, Australia (1997).
- Alderley Edge School for Girls, Cheshire, United Kingdom (1999).
- All Saints Ecumenical Nursery, All Saints CofE School, Putney, London, United Kingdom (2000).
- Jubilee Primary, Pacific Pines, QLD, Australia (2001).
- Emmaus College, Jimboomba, QLD, Australia (2002).
- Faith Primary School Roman Catholic-Church of England, Liverpool, United Kingdom (2004).
- Academy of St Francis of Assisi, Fairfield, Liverpool, United Kingdom (2005).
- Gaelscoil Shlí Dála, Borris in Ossory, Ireland (2005).
- St Joseph's Catholic & Anglican High School, Wrexham, Wales, United Kingdom (2006).
- St Joseph's Catholic & CofE Primary School, Staveley, United Kingdom (2006).
- Unity College, Caloundra, QLD, Australia (2006).
- Holy Family RC & CofE College, Rochdale, United Kingdom (2007).
- Christ the King Joint Catholic & CofE College, Newport, Isle of Wight, United Kingdom (2008/13).
- St Chad's Catholic & CofE Joint Faith High School, Runcorn, United Kingdom (2009).
- Academy of St Nicholas, 51 Horrocks Avenue, Garston, Liverpool, United Kingdom (2010).
- Holy Spirit Catholic & CofE Primary School, Wirral, United Kingdom (2010).
- St Francis Catholic & CofE Primary Academy, Ventnor, Isle of Wight, United Kingdom (2010).

All Saints Academy, Cheltenham, United Kingdom (2011).

Christ the King Primary School, Macclesfield, United Kingdom (2011).

Hope Academy, St Helen's, United Kingdom (2011).

Hope Primary School, Knowsley, United Kingdom (2011).

Holy Trinity Catholic & CofE School, Barnsley, United Kingdom (2012).

Emmaus Catholic & CofE Primary School, Sheffield, United Kingdom (2014).

Holy Trinity Academy, Telford, Shropshire, United Kingdom (2015).

All Saints Sixth Form College, 51 Horrocks Avenue, Garston, Liverpool, United Kingdom (2017).

## APPENDIX 3

### GUIDELINES FOR JOINT-CHURCH SCHOOLS IN NORTHERN IRELAND; AND IN ENGLAND & WALES

1): **Northern Ireland:** There are not yet any Joint-Church schools in Northern Ireland. But since all mainstream Church Schools are 100% funded by Government in Northern Ireland, its Department of Education has worked closely with the Anglican, Presbyterian, Methodist and Roman Catholic Churches to prepare guidance for consideration by stakeholders planning to create a Joint-Church School. This information, "**Circular No 2015/15: Jointly-Managed Schools:**" is available on the Department's website: [www.education-ni.gov.uk](http://www.education-ni.gov.uk)

In the particular Northern Ireland situation, a jointly-managed school is defined as:-

*"a [Government-] grant-aided school, providing shared education with a Christian ethos, with Trustee representation agreed by the Transferor [Protestant] churches and the Catholic Church and managed by a Board of Governors with balanced representation from both the main [Protestant and Catholic] communities here".*

2): **England & Wales:** The English and Welsh Anglican Roman-Catholic Committee (ARC) is a bilateral body that promotes good ecumenical relations between the Church of England & the Church in Wales and the Roman Catholic Church in England & Wales. English & Welsh ARC has supported Joint-Church Schools over many years. The Committee is updating its 2010 briefing and guidelines for bishops, clergy, education specialists and parents of the Churches and welcomes comments. The 2010 guidelines can be found online at: <https://www.cte.org.uk/Publisher/File.aspx?ID=50290>

*"Commitment to Christian unity, rather than financial considerations, should be the prime motivating force for the creation of a Joint-Church School from two single denomination schools. Joint Church Schools may emerge out of particular local circumstances (e.g. falling pupil rolls), but they should also be considered on principle when new schools are being planned.*

...

*"The providers of Church Schools, including Joint Church Schools welcome the duty imposed (from September 2007) on the governing bodies of all maintained schools by the Education and Inspections Act 2006 to promote community cohesion"*

...

*"Above all, we must be able to say of a Joint Roman Catholic-Anglican School: 'It is a Catholic School,' and: 'It is an Anglican School.' In other words, it is all that the Roman Catholic Church requires of a Church School and all the Church of England requires of a Church School. But it is also more than that: it is an expression of what the Second Vatican Council called 'the real though imperfect communion' that exists between our two churches, and of our commitment to work for full visible communion between them. A Joint Church School is a sign of the reconciliation and shared discipleship that the Christian gospel brings".*















*"I think our diversity shows that although many of the children come from different traditions, they see that it is possible for children of different traditions to come together".*

St Edwards Royal Free Ecumenical Middle School, Windsor, UK

*"When Stann Creek Ecumenical High School opened in 1974, an era of denominational separation in secondary education had come to an end"*

Stann Creek Ecumenical High School, Belize



*"It was a case of building on the things we have in common. There are still some fundamental differences; but we have chosen to build on the things we hold together".*

St Columba College, Andrew's Farm, South Australia, Australia

*"...it is what we have in common which binds us as a community. What we do, we do together".*

St Francis Xavier School, Richmond, North Yorkshire, United Kingdom



*"The idea of people coming together and being enriched and acknowledging and tolerating our differences ... The questions of religious difference are handled with respect; we have a vision to nurture everyone – we're not about conversion..."*

The Doane Stuart School, Albany, New York, USA

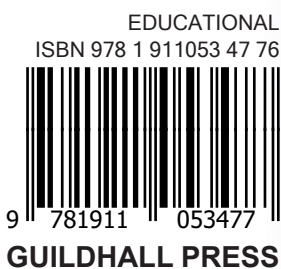
*"As the local committee elected are representatives of both Christian traditions in our Parish, it is important that the religious ethos of the school reflects this... We envisage the Gaelscoil to be a progressive, vibrant and safe place encompassing our Christian and Cultural traditions. It will be warm and welcoming lying at the heart of our community..."*

Gaelscoil Shlí Dála, Borris in Ossory, Co Laois, Republic of Ireland



*"We have a christian ethos with compassion, respect and understanding. If people would only come here and see how it worked and feel the whole atmosphere, then they would see how it can work really well".*

Trinity School, Teignmouth, Devon, United Kingdom



This 2nd edition is funded by  
The Northern Ireland Council for  
Integrated Education  
25 College Gardens  
BELFAST BT9 6BS  
United Kingdom  
[www.nicie.org](http://www.nicie.org)  
Email: [admin@nicie.org.uk](mailto:admin@nicie.org.uk)  
Tel: (+44) 28 9097 2910

£5.00

